

LINEA **ESSENTIAL**
ATLANTIS
2020



CAPPELLI

Egon

NEW

- Main Fabric: 80% organic cotton - 20% recycled cotton
- Texture: twill



TECH SPECS	ONE SIZE · 200 GSM · HOOK & LOOP CLOSURE
FEATURES	CURVED VISOR
SUSTAINABLE FEATURES	RECYCLED BUCKRAM · RECYCLED VISOR IMPACT REDUCTION: -20% CO ₂ eq* · 0,683 kg CO ₂ eq



Global Recycled Standard
©TextileExchange
Buckram 100% GRS Recycled Polyester
Visor 100% GRS Recycled Polyethylene
Certified by ICEA
ICEA-TX- 3146



Global Recycled Standard
©TextileExchange
Taping 100% GRS Recycled Polyester
Visor 100% GRS Recycled Polyethylene
Certified by ICEA
ICEA-TX- 3146

Dad Hat-S Five

NEW

- Main Fabric: 80% organic cotton - 20% recycled cotton
- Texture: twill



TECH SPECS	ONE SIZE · 270 GSM · FULL METAL BUCKLE WITH METAL HOLE
FEATURES	MID VISOR · UNSTRUCTURED FRONT PANEL · GARMENT WASHING
SUSTAINABLE FEATURES	RETRAZE® RECYCLED VISOR · SELF FABRIC SWEATBAND IMPACT REDUCTION: -21% CO ₂ eq* · 0,897 kg CO ₂ eq

Paka

NEW

- Main Fabric: 100% recycled polyester
- Texture: twill



TECH SPECS	ONE SIZE · 200 GSM · RECYCLED SNAPBACK CLOSURE
FEATURES	CURVED VISOR · ROPE AROUND BILL
SUSTAINABLE FEATURES	RECYCLED BUCKRAM · RECYCLED POLYESTER SWEATBAND · RETRAZE® RECYCLED VISOR · IMPACT REDUCTION: -19% CO ₂ eq* · 0,646 kg CO ₂ eq



Global Recycled Standard
©TextileExchange

Main fabric, Taping, Buckram
100% GRS Recycled Polyester
Visor 100% GRS Recycled Polyethylene
Certified by ICEA
ICEA-TX- 3146

Chao

NEW

- Main Fabric: 80% organic cotton - 20% recycled cotton
- Texture: canvas



TECH SPECS	ONE SIZE · 255 GSM · RECYCLED SNAPBACK CLOSURE
FEATURES	FLAT VISOR · GARMENT WASHING · UNSTRUCTURED FRONT PANEL ROPE AROUND BILL
SUSTAINABLE FEATURES	RETRAZE® RECYCLED VISOR · SELF FABRIC SWEATBAND IMPACT REDUCTION: -21% CO ₂ eq* · 0,924 kg CO ₂ eq



Global Recycled Standard
©TextileExchange

Taping 100% GRS Recycled Polyester
Visor 100% GRS Recycled Polyethylene
Certified by ICEA
ICEA-TX- 3146

Darwin

NEW

- Main Fabric: 80% organic cotton - 20% recycled cotton
- Texture: canvas



TECH SPECS	ONE SIZE · 255 GSM · RIBBON WITH PLASTIC CLIP CLOSURE
FEATURES	FLAT VISOR · ADJUSTABLE VISOR · UNSTRUCTURED FRONT PANEL GARMENT WASHING
SUSTAINABLE FEATURES	RETRAZE® RECYCLED VISOR · SELF FABRIC SWEATBAND IMPACT REDUCTION: -20% CO ₂ eq* · 0,792 kg CO ₂ eq



Taping 100% GRS Recycled Polyester
Visor 100% GRS Recycled Polyethylene
Certified by ICEA
ICEA-TX- 3146

Nila

NEW

- Front & Bill: 100% recycled polyester
- Side & Back: 95% recycled polyester - 5% elastane
- Texture: microtwill



TECH SPECS	ONE SIZE · 150 GSM · FULLY CLOSED ON BACK
FEATURES	MID VISOR · UPF 50+ PROTECTION · WATER RESISTANT - PFC FREE
SUSTAINABLE FEATURES	RECYCLED BUCKRAM · RECYCLED ELASTIC SWEATBAND · RETRAZE® RECYCLED VISOR · IMPACT REDUCTION: -20% CO ₂ eq* · 0,657 kg CO ₂ eq



Main Fabric, Taping, Buckram
100% GRS Recycled Polyester
Mesh 95% GRS Recycled Polyester
Sweatband 91% GRS Recycled Polyester
Visor 100% GRS Recycled Polyethylene
Certified by ICEA
ICEA-TX- 3146

Dempo

NEW

- Main Fabric: 100% recycled polyester
- Side & Back: 95% recycled polyester - 5% elastane
- Texture: jacquard



TECH SPECS	ONE SIZE · 162 GSM · RECYCLED RUBBER HOOK & LOOP CLOSURE
FEATURES	MID VISOR
SUSTAINABLE FEATURES	RECYCLED BUCKRAM · RECYCLED DRY-TECH SWEATBAND · RETRAZE® RECYCLED VISOR · IMPACT REDUCTION: -18% CO ₂ eq* · 0,588 kg CO ₂ eq



Global Recycled Standard
©TextileExchange

Main Fabric, Sweatband, Taping, Buckram
100% GRS Recycled Polyester
Mesh 95% GRS Recycled Polyester
Visor 100% GRS Recycled Polyethylene
Certified by ICEA
ICEA-TX- 3146

Teon

NEW

- Front & Bill: 50% recycled cotton - 50% cotton
- Side & Back: 100% recycled polyester
- Texture: twill



TECH SPECS	ONE SIZE · 260 GSM · HOOK & LOOP CLOSURE
FEATURES	MID VISOR · UNSTRUCTURED FRONT PANEL · PIGMENT DYEING · SOFT MESH
SUSTAINABLE FEATURES	RECYCLED POLYESTER SWEATBAND · RECYCLED VISOR IMPACT REDUCTION: -19% CO ₂ eq* · 0,660 kg CO ₂ eq



Global Recycled Standard
©TextileExchange

Main Fabric 50% GRS Recycled Cotton
Mesh, Sweatband, Taping,
100% GRS Recycled Polyester
Visor 100% GRS Recycled Polyethylene
Certified by ICEA
ICEA-TX- 3146

Iraya

NEW

- Main Fabric: 50% recycled cotton - 50% cotton
- Texture: denim twill



DARK DENIM DENIM LIGHT DENIM

TECH SPECS	ONE SIZE · 339 GSM · FULL METAL BUCKLE WITH METAL HOLE
FEATURES	MID VISOR · UNSTRUCTURED FRONT PANEL
SUSTAINABLE FEATURES	DYSTAR® DYEING · RETRAZE® RECYCLED VISOR · ORGANIC COTTON SWEATBAND · IMPACT REDUCTION: -16% CO ₂ eq* · 0,871 kg CO ₂ eq



Main Fabric 50% GRS Recycled Cotton
Taping 100% GRS Recycled Polyester
Visor 100% GRS Recycled Polyethylene
Certified by ICEA
ICEA-TX- 3146



Ruby

NEW

- Main Fabric: 50% recycled cotton - 50% cotton
- Texture: denim twill



DARK DENIM DENIM LIGHT DENIM

TECH SPECS	ONE SIZE · 339 GSM · FULL METAL BUCKLE WITH METAL HOLE
FEATURES	FLAT VISOR · ADJUSTABLE VISOR · UNSTRUCTURED FRONT PANEL
SUSTAINABLE FEATURES	DYSTAR® DYEING · RETRAZE® RECYCLED VISOR · ORGANIC COTTON SWEATBAND · IMPACT REDUCTION: -20% CO ₂ eq* · 0,934 kg CO ₂ eq



Main Fabric 50% GRS Recycled Cotton
Taping 100% GRS Recycled Polyester
Visor 100% GRS Recycled Polyethylene
Certified by ICEA
ICEA-TX- 3146



Dana

NEW

- Main Fabric: 50% recycled cotton - 50% cotton
- Texture: denim twill



TECH SPECS	ONE SIZE · 339 GSM
FEATURES	SOFT CROWN
SUSTAINABLE FEATURES	DYSTAR® DYEING · ORGANIC COTTON SWEATBAND IMPACT REDUCTION: -17% CO ₂ eq* · 1,320 kg CO ₂ eq



Main Fabric 50% GRS Recycled Cotton
Taping 100% GRS Recycled Polyester
Certified by ICEA
ICEA-TX- 3146

Severny

NEW

- Main Fabric: 100% recycled polyester
- Texture: corduroy



TECH SPECS	ONE SIZE · 230 GSM · RECYCLED SNAPBACK CLOSURE
FEATURES	FLAT VISOR · ADJUSTABLE VISOR · UNSTRUCTURED FRONT PANEL
SUSTAINABLE FEATURES	RECYCLED POLYESTER SWEATBAND · RETRAZE® RECYCLED VISOR IMPACT REDUCTION: -20% CO ₂ eq* · 0,568 kg CO ₂ eq



Main fabric, Sweatband, Taping, Buckram
100% GRS Recycled Polyester
Visor 100% GRS Recycled Polyethylene
Certified by ICEA
ICEA-TX- 3146

Cumbre

NEW

- Main Fabric: 100% recycled polyester
- Lining: 100% recycled polyester
- Texture: corduroy



TECH SPECS	ONE SIZE · 230 GSM
FEATURES	SOFT CROWN
SUSTAINABLE FEATURES	RECYCLED POLYESTER SWEATBAND IMPACT REDUCTION: -20% CO ₂ eq* · 0,654 kg CO ₂ eq



Main Fabric, Lining
100% GRS Recycled Polyester
Certified by ICEA
ICEA-TX- 3146



Teide

NEW

- Main Fabric: 100% textile-to-textile recycled polyester
- Texture: microfiber



TECH SPECS	ONE SIZE · 105 GSM · ADJUSTABLE CLOSURE WITH RECYCLED ELASTIC BAND AND METAL BUCKLE
FEATURES	MID VISOR · CONTRAST COLOR UNDERBILL · SOFT DETAIL ON VISOR MOISTURE-WICKING
SUSTAINABLE FEATURES	RECYCLED DRY-TECH SWEATBAND · RECYCLED VISOR IMPACT REDUCTION: -15% CO ₂ eq* · 0,445 kg CO ₂ eq



Main Fabric, Sweatband
100% GRS Recycled Polyester
Band 91% GRS Recycled Polyester
Visor 100% GRS Recycled Polyethylene
Certified by ICEA
ICEA-TX- 3146



Gorely

• Main Fabric: 100% recycled polyester

NEW



TECH SPECS	ONE SIZE · 95 G
FEATURES	SEAMLESS · CHUNKY LOOK · MELANGE EFFECT
SUSTAINABLE FEATURES	IMPACT REDUCTION: -23% CO ₂ eq* · 0,769 kg CO ₂ eq

Nantai

• Main Fabric: 100% recycled merino wool

NEW



TECH SPECS	23,5 x 50,5 CM · 150 GSM
FEATURES	THERMAL REGULATION · ANTIBACTERIAL PROPERTIES · COMPACT DESIGN
SUSTAINABLE FEATURES	IMPACT REDUCTION: -79% CO ₂ eq* · 0,919 kg CO ₂ eq



Baru

• Main Fabric: 100% recycled merino wool

NEW



BLACK

NAVY

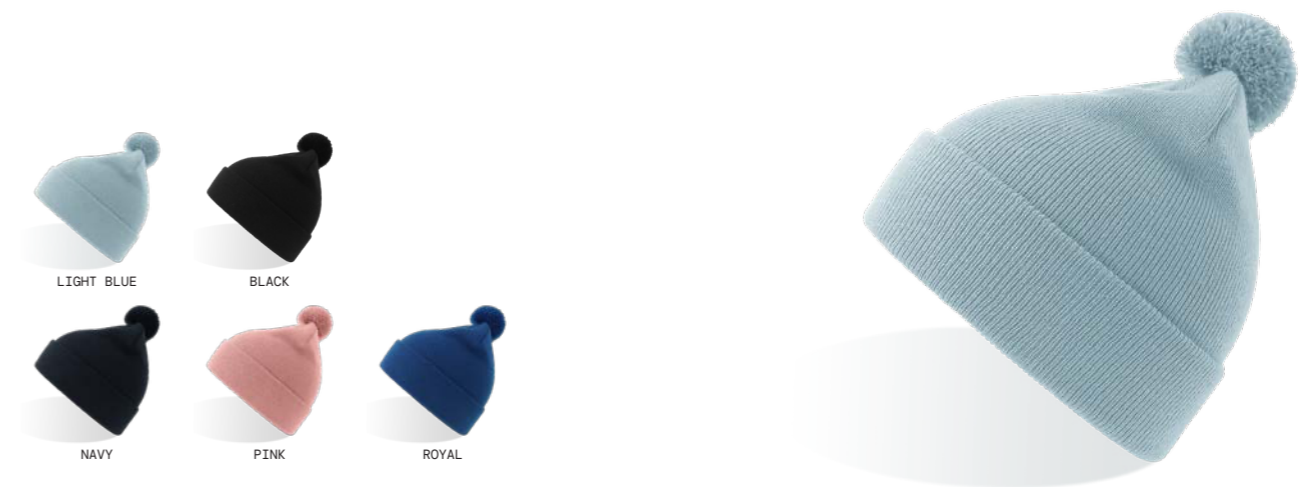
TECH SPECS	ONE SIZE · 150 GSM
FEATURES	THERMAL REGULATION · ANTIBACTERIAL PROPERTIES · COMPACT DESIGN
SUSTAINABLE FEATURES	IMPACT REDUCTION: -73% CO ₂ eq* · 0,709 kg CO ₂ eq



Kid Wind-S with Pompom

• Main Fabric: 100% recycled polyester

NEW



LIGHT BLUE

BLACK

NAVY

PINK

ROYAL

TECH SPECS	KIDS SIZE · 65 G
SUSTAINABLE FEATURES	IMPACT REDUCTION: -22% CO ₂ eq* · 0,550 kg CO ₂ eq

Bolt-S

NEW

- Main Fabric: 62% recycled polyester - 38% polyester
- Texture: twill



TECH SPECS	ONE SIZE · 200 GSM · HIGH QUALITY HOOK & LOOP CLOSURE
FEATURES	CURVED VISOR · STRETCHABLE FABRIC
SUSTAINABLE FEATURES	RECYCLED BUCKRAM · RECYCLED DRY-TECH SWEATBAND · RETRAZE® RECYCLED VISOR · IMPACT REDUCTION: -16% CO ₂ eq* · 0,617 kg CO ₂ eq

Rapper Jersey-S

NEW

- Front & Bill: 95% recycled polyester - 5% elastane
- Side & Back: 100% recycled polyester
- Texture: jersey



TECH SPECS	ONE SIZE · 200 GSM · RECYCLED SNAPBACK CLOSURE
FEATURES	MID VISOR
SUSTAINABLE FEATURES	RECYCLED BUCKRAM · RECYCLED POLYESTER SWEATBAND · RETRAZE® RECYCLED VISOR · IMPACT REDUCTION: -19% CO ₂ eq* · 0,637 kg CO ₂ eq





Action-S

- Main Fabric: 80% organic cotton - 20% recycled cotton
- Texture: twill



TECH SPECS	ONE SIZE · 280 GSM · SUNDAY BUCKLE CLOSURE
FEATURES	CURVED VISOR · METAL EYELETS · GARMENT WASHING UNSTRUCTURED FRONT PANEL
SUSTAINABLE FEATURES	RETRAZE® RECYCLED VISOR IMPACT REDUCTION: -22% CO ₂ eq* · 0,850 kg CO ₂ eq



Andy

- Main Fabric: 100% recycled polyester



TECH SPECS	ONE SIZE · 82 G · SEAMLESS
SUSTAINABLE FEATURES	IMPACT REDUCTION: -22% CO ₂ eq* · 0,679 kg CO ₂ eq

Army-S

- Main Fabric: 80% organic cotton - 20% recycled cotton
- Lining: 100% recycled polyester
- Texture: ripstop



BLACK

OLIVE

TECH SPECS	ONE SIZE · 215 GSM · HOOK & LOOP CLOSURE
FEATURES	CURVED VISOR · GARMENT WASHING
SUSTAINABLE FEATURES	R-PET SWEATBAND · RECYCLED VISOR IMPACT REDUCTION: -20% CO ₂ eq* · 0,830 kg CO ₂ eq



Global Recycled Standard
©TextileExchange
 Lining, Sweatband, Taping
 100% GRS Recycled Polyester
 Certified by ICEA
 ICEA-TX-3146

Bandana Goal-S

- Main Fabric: 100% recycled polyester



TECH SPECS	50x50 · 115 G
SUSTAINABLE FEATURES	IMPACT REDUCTION: -18% CO ₂ eq* · 0,398 kg CO ₂ eq



Global Recycled Standard
©TextileExchange
 100% GRS Recycled Polyester
 Certified by ICEA
 ICEA-TX-3146

Bank Five-S

- Main Fabric: 100% recycled polyester
- Bill & Underbill: 100% recycled polyester
- Texture: microfiber



TECH SPECS	ONE SIZE · 120 GSM · RECYCLED SNAPBACK CLOSURE
FEATURES	FLAT VISOR · LASER HOLES
SUSTAINABLE FEATURES	RECYCLED BUCKRAM · R-PET SWEATBAND · RETRAZE® RECYCLED VISOR IMPACT REDUCTION: -22% CO ₂ eq* · 0,579 kg CO ₂ eq



Main Fabric, Sweatband, Taping, Buckram
100% GRS Recycled Polyester
Visor 100% GRS Recycled Polyethylene
Certified by ICEA
ICEA-TX-3146



Main Fabric, Sweatband, Taping, Buckram
100% GRS Recycled Polyester
Visor 100% GRS Recycled Polyethylene
Certified by ICEA
ICEA-TX-3146

Beat-S

- Main Fabric: 100% recycled polyester
- Texture: twill



TECH SPECS	ONE SIZE · 300 GSM · RECYCLED SNAPBACK CLOSURE
FEATURES	MID VISOR
SUSTAINABLE FEATURES	RECYCLED BUCKRAM · R-PET SWEATBAND · RETRAZE® RECYCLED VISOR IMPACT REDUCTION: -23% CO ₂ eq* · 0,612 kg CO ₂ eq

Bill-S

- Main Fabric: 100% recycled polyester
- Lining: 100% recycled polyester



DARK GREY BLACK NAVY

TECH SPECS	ONE SIZE · 105 G
SUSTAINABLE FEATURES	FULL R-PET FLEECE LINING · POLARTEC® IMPACT REDUCTION: -23% CO ₂ eq* · 0,846 kg CO ₂ eq



Birk

- Main Fabric: 100% recycled polyester



DARK GREY BLACK NAVY ROYAL

TECH SPECS	ONE SIZE · 30 G
FEATURES	COMPACT DESIGN · FLATLOCK SEAMS
SUSTAINABLE FEATURES	IMPACT REDUCTION: -20% CO ₂ eq* · 0,292 kg CO ₂ eq



Bond-S

• Main Fabric: 97% recycled polyester - 3% elastane



WHITE

BLACK

NAVY

TECH SPECS	ONE SIZE · 190 GSM · QUALITY HOOK & LOOP CLOSURE
FEATURES	CURVED VISOR · BONDED TAPING · WATER RESISTANT - PFC FREE UPF50+
SUSTAINABLE FEATURES	RECYCLED DRY-TECH · RECYCLED BUCKRAM IMPACT REDUCTION: -21% CO ₂ eq* · 0,591 kg CO ₂ eq



Main Fabric 97% GRS Recycled Polyester
Sweatband, Taping, Buckram
100% GRS Recycled Polyester
Visor 100% GRS Recycled Polyethylene
Certified by ICEA
ICEA-TX-3146



100% GRS Recycled Polyester
Certified by ICEA
ICEA-TX-3146



STANDARD
100
SH020 220679
TESTEX

Brad-S

• Main Fabric: 100% recycled polyester yarn



LT GREY MELANGE

DK GREY MELANGE

BLACK

NAVY

OLIVE

TECH SPECS	ONE SIZE · 74 G
FEATURES	DUAL STYLE · BEANIE WITH RIBS
SUSTAINABLE FEATURES	IMPACT REDUCTION: -22% CO ₂ eq* · 0,630 kg CO ₂ eq

Breezy-S

• Main Fabric: 100% recycled nylon



TECH SPECS	ONE SIZE · 120 GSM · RECYCLED SNAPBACK CLOSURE
FEATURES	MID VISOR · WATER RESISTANT - PFC FREE · LASER HOLES
SUSTAINABLE FEATURES	RETRAZE® RECYCLED VISOR · RECYCLED DRY-TECH SWEATBAND RECYCLED BUCKRAM · IMPACT REDUCTION: -33% CO ₂ eq* 0,431 kg CO ₂ eq



Global Recycled Standard
©TextileExchange

Main Fabric 100% GRS Recycled Nylon
Sweatband, Taping, Buckram
100% GRS Recycled Polyester
Visor 100% GRS Recycled Polyethylene

Certified by ICEA
ICEA-TX-3146

Bryce

• Main Fabric: 100% recycled polyester
• Side & Back: 100% recycled polyester
• Texture: twill



TECH SPECS	ONE SIZE · 200 GSM · RECYCLED SNAPBACK CLOSURE
FEATURES	MID VISOR
SUSTAINABLE FEATURES	RECYCLED BUCKRAM · RETRAZE® RECYCLED VISOR SELF FABRIC SWEATBAND · IMPACT REDUCTION: -21% CO ₂ eq* 0,495 kg CO ₂ eq



Global Recycled Standard
©TextileExchange

Main Fabric, Taping, Buckram
100% GRS Recycled Polyester
Mesh 72% GRS Recycled Polyester
Visor 100% GRS Recycled Polyethylene

Certified by ICEA
ICEA-TX-3146

Bucket Cotton-S

- Main Fabric: 80% organic cotton - 20% recycled cotton
- Texture: twill



TECH SPECS	ONE SIZE · 200 GSM
SUSTAINABLE FEATURES	SELF FABRIC SWEATBAND · IMPACT REDUCTION: -15% CO ₂ eq* 0,952 kg CO ₂ eq



Bucket Pocket-S

- Main Fabric: 100% recycled polyester
- Texture: ripstop



TECH SPECS	ONE SIZE · 85 GSM
FEATURES	REVERSIBLE · FOLDABLE · LOOP STRING · WATER RESISTANT PFC FREE
SUSTAINABLE FEATURES	IMPACT REDUCTION: -19% CO ₂ eq* · 0,473 kg CO ₂ eq

Champion-S

- Main Fabric: 100% recycled polyester
- Texture: twill



BLACK

NAVY

TECH SPECS	ONE SIZE · 300 GSM · FULL METAL BUCKLE WITH SEWN HOLE
FEATURES	CURVED VISOR
SUSTAINABLE FEATURES	RETRAZE® RECYCLED VISOR · RECYCLED BUCKRAM IMPACT REDUCTION: -21% CO ₂ eq* · 0,641 kg CO ₂ eq

Cordy-S

- Main Fabric: 100% recycled polyester
- Texture: corduroy



GREY

BROWN

BLACK

NAVY

STONE

BURGUNDY

OLIVE

TECH SPECS	ONE SIZE · 230 GSM · FULL METAL BUCKLE WITH METAL HOLE
FEATURES	CURVED VISOR
SUSTAINABLE FEATURES	RECYCLED BUCKRAM · R-PET SWEATBAND · RETRAZE® RECYCLED VISOR IMPACT REDUCTION: -21% CO ₂ eq* · 0,556 kg CO ₂ eq



Main Fabric, Sweatband, Taping, Buckram
100% GRS Recycled Polyester
Visor 100% GRS Recycled Polyethylene
Certified by ICEA
ICEA-TX-3146



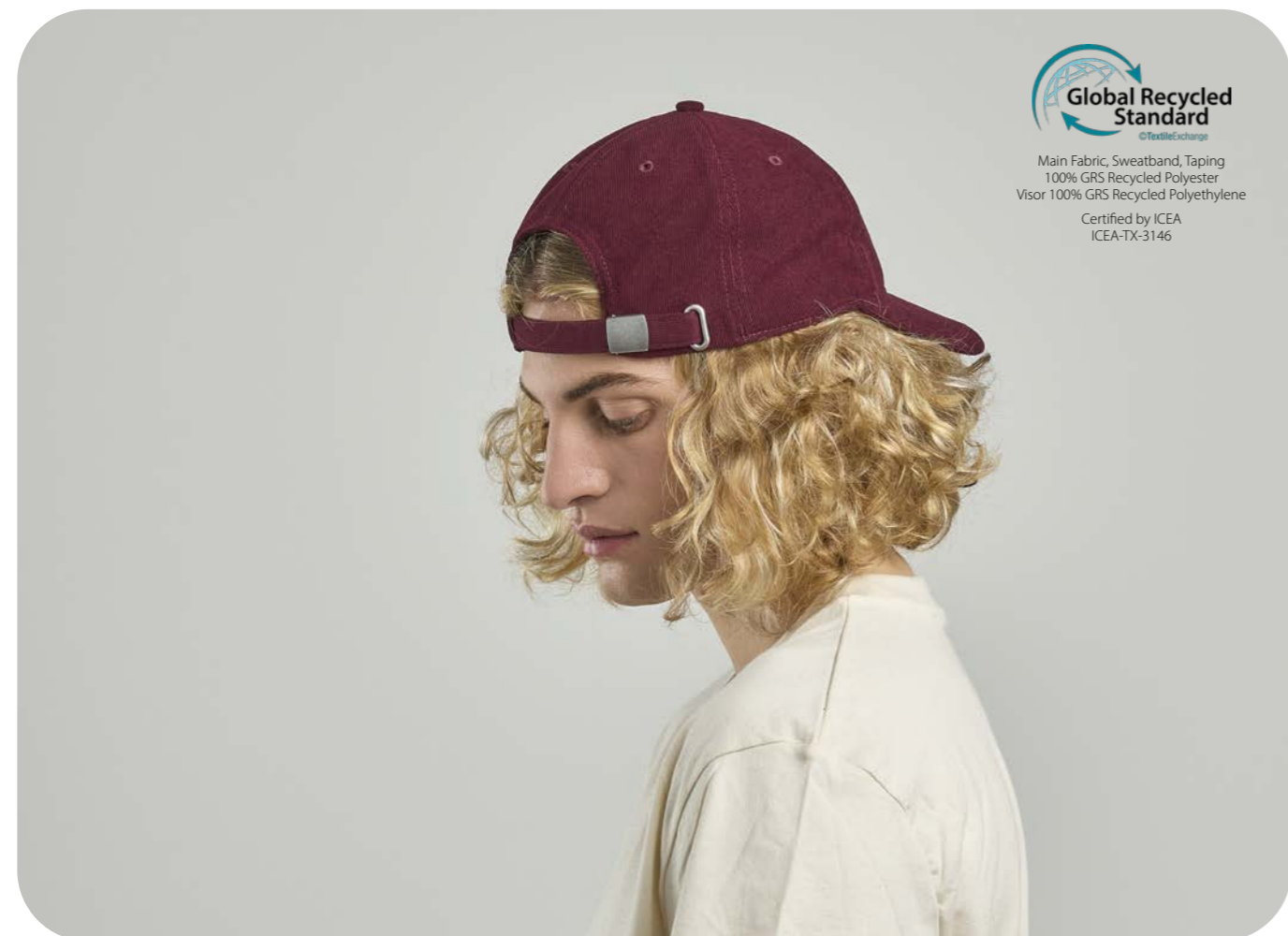
Main Fabric, Sweatband, Taping, Buckram
100% GRS Recycled Polyester
Visor 100% GRS Recycled Polyethylene
Certified by ICEA
ICEA-TX-3146

Creep-S

- Main Fabric: 100% recycled polyester
- Texture: corduroy



TECH SPECS	ONE SIZE · 215 GSM · FULL METAL BUCKLE WITH METAL HOLE
FEATURES	MID VISOR · UNSTRUCTURED FRONT PANEL
SUSTAINABLE FEATURES	R-PET SWEATBAND · RETRAZE® RECYCLED VISOR IMPACT REDUCTION: -19% CO ₂ eq* · 0,534 kg CO ₂ eq



Global Recycled Standard
©TextileExchange

Main Fabric, Sweatband, Taping
100% GRS Recycled Polyester
Visor 100% GRS Recycled Polyethylene

Certified by ICEA
ICEA-TX-3146



Global Recycled Standard
©TextileExchange

Taping 100% GRS Recycled Polyester
Visor 100% GRS Recycled Polyethylene

Certified by ICEA
ICEA-TX-3146

Cruz

- Main Fabric: 80% organic cotton - 20% recycled cotton
- Texture: canvas



TECH SPECS	ONE SIZE · 255 GSM · RECYCLED SNAPBACK CLOSURE
FEATURES	FLAT VISOR · GARMENT WASHING · UNSTRUCTURED FRONT PANEL
SUSTAINABLE FEATURES	RETRAZE® RECYCLED VISOR · SELF FABRIC SWEATBAND IMPACT REDUCTION: -23% CO ₂ eq* · 0,867 kg CO ₂ eq

Dad Hat-S

- Main Fabric: 80% organic cotton - 20% recycled cotton
- Texture: twill



TECH SPECS	ONE SIZE · 270 GSM · FULL METAL BUCKLE WITH METAL HOLE
FEATURES	MID VISOR · GARMENT WASHING · UNSTRUCTURED FRONT PANEL
SUSTAINABLE FEATURES	RETRAZE® RECYCLED VISOR · SELF FABRIC SWEATBAND IMPACT REDUCTION: -22% CO ₂ eq* · 0,839 kg CO ₂ eq



Dad Hat Destroyed-S

- Main Fabric: 80% organic cotton - 20% recycled cotton
- Texture: twill



TECH SPECS	ONE SIZE · 270 GSM · FULL METAL BUCKLE WITH METAL HOLE
FEATURES	MID VISOR · GARMENT WASHING · UNSTRUCTURED FRONT PANEL
SUSTAINABLE FEATURES	RETRAZE® RECYCLED VISOR · SELF FABRIC SWEATBAND IMPACT REDUCTION: -22% CO ₂ eq* · 0,893 kg CO ₂ eq



Digg-S

- Main Fabric: 50% recycled cotton - 50% virgin cotton
- Texture: twill



TECH SPECS	ONE SIZE · 260 GSM · FULL METAL BUCKLE WITH METAL HOLE
FEATURES	MID VISOR · UNSTRUCTURED FRONT PANEL · PIGMENT DYED FABRIC
SUSTAINABLE FEATURES	RECYCLED VISOR · R-PET SWEATBAND IMPACT REDUCTION: -18% CO ₂ eq* · 0,690 kg CO ₂ eq



Main Fabric 50% GRS Recycled Cotton
Sweatband, Taping
100% GRS Recycled Polyester
Visor 100% GRS Recycled Polyethylene
Certified by ICEA
ICEA-TX-3146



Main Fabric 100% GRS Recycled Nylon
Mesh, Sweatband, Taping
100% GRS Recycled Polyester
Certified by ICEA
ICEA-TX-3146

Erie

- Front&Bill: 100% recycled nylon
- Side & Back: 100% recycled polyester



TECH SPECS	ONE SIZE · 120 GSM · RIBBON WITH PLASTIC CLOSURE
FEATURES	FLAT VISOR · SOFT VISOR · WATER RESISTANT - PFC FREE UNSTRUCTURED FRONT PANEL
SUSTAINABLE FEATURES	RECYCLED DRY-TECH SWEATBAND · IMPACT REDUCTION: -20% CO ₂ eq* 0,389 kg CO ₂ eq

Estoril-S

- Main Fabric: 100% recycled polyester
- Texture: jacquard



TECH SPECS	ONE SIZE · 100 GSM · HIGH QUALITY HOOK&LOOP WITH PLASTIC LOOP
FEATURES	CURVED VISOR · HALF PIPING ON VISOR
SUSTAINABLE FEATURES	RECYCLED BUCKRAM · R-PET SWEATBAND · RETRAZE® RECYCLED VISOR IMPACT REDUCTION: -21% CO ₂ eq* · 0,499 kg CO ₂ eq



Main Fabric, Sweatband, Taping, Buckram
100% GRS Recycled Polyester
Visor 100% GRS Recycled Polyethylene
Certified by ICEA
ICEA-TX-3146

Fam-S

- Main Fabric: 81% recycled polyester - 19% polyester
- Underbill: 100% recycled polyester
- Texture: suede



TECH SPECS	ONE SIZE · 135 GSM · FULL METAL BUCKLE WITH METAL HOLE
FEATURES	MID VISOR
SUSTAINABLE FEATURES	RECYCLED BUCKRAM · R-PET SWEATBAND · RETRAZE® RECYCLED VISOR IMPACT REDUCTION: -19% CO ₂ eq* · 0,527 kg CO ₂ eq



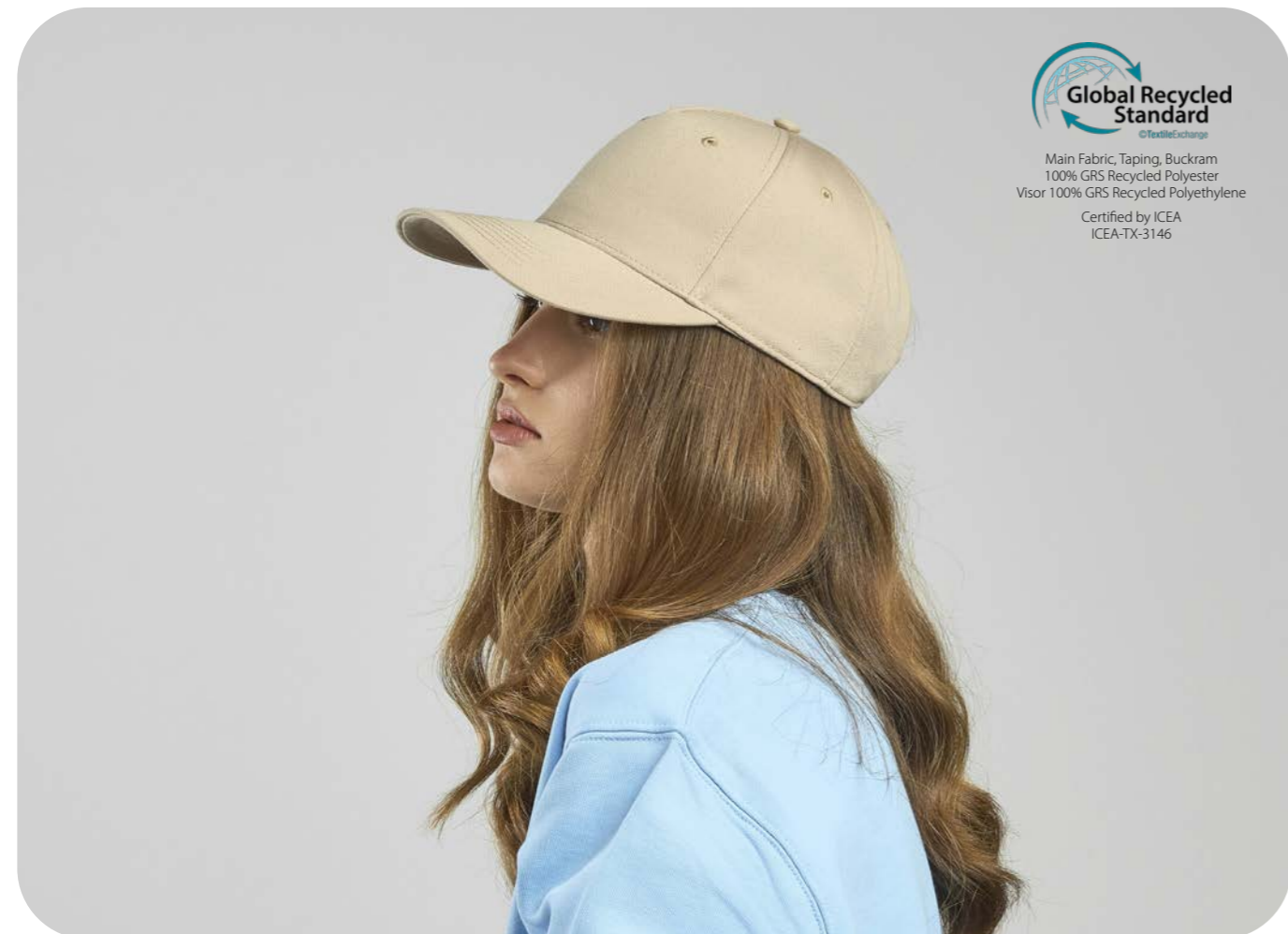
Main Fabric 81% GRS Recycled Polyester
Underbill, Sweatband, Taping, Buckram
100% GRS Recycled Polyester
Visor 100% GRS Recycled Polyethylene
Certified by ICEA
ICEA-TX-3146

Fiji

- Main Fabric: 100% recycled polyester
- Texture: twill



TECH SPECS	ONE SIZE · 200 GSM · HOOK & LOOP CLOSURE
FEATURES	CURVED VISOR
SUSTAINABLE FEATURES	RECYCLED BUCKRAM · RETRAZE® RECYCLED VISOR SELF FABRIC SWEATBAND · IMPACT REDUCTION: -22% CO ₂ eq* 0,552 kg CO ₂ eq



Flash-S

- Main Fabric: 95% recycled polyester - 5% elastane
- Texture: jersey



TECH SPECS	ONE SIZE · 200 G
FEATURES	STRETCHABLE FABRIC
SUSTAINABLE FEATURES	IMPACT REDUCTION: -25% CO ₂ eq* · 0,425 kg CO ₂ eq

Forever-S

- Main Fabric: 80% organic cotton - 20% recycled cotton
- Texture: twill



TECH SPECS	S/M - L/XL · 280 GSM
FEATURES	GARMENT WASHING
SUSTAINABLE FEATURES	SELF FABRIC SWEATBAND · IMPACT REDUCTION: -21% CO ₂ eq* 1,330 kg CO ₂ eq




 Taping 100% GRS Recycled Polyester
 Certified by ICEA
 ICEA-TX-3146

Fraser

- Main Fabric: 100% organic cotton
- Texture: twill



TECH SPECS	ONE SIZE · 260 GSM · FULL METAL BUCKLE WITH METAL HOLE
FEATURES	MID VISOR · GARMENT WASHING · UNSTRUCTURED FRONT PANEL
SUSTAINABLE FEATURES	RETRAZE® RECYCLED VISOR · SELF FABRIC SWEATBAND IMPACT REDUCTION: -12% CO ₂ eq* · 0,788 kg CO ₂ eq




 Organic Certified by ICEA
 GOTS-11099

Freedom Basic-S

• Main Fabric: 100% recycled polyester



WHITE



BLACK



NAVY



RED



ROYAL

TECH SPECS

49x25 · 130 G

SUSTAINABLE FEATURES

REPREVE® · IMPACT REDUCTION: -18% CO₂eq* · 0,380 kg CO₂ eq



Gatsby Street-S

• Main Fabric: 80% organic cotton - 20% recycled cotton
 • Texture: canvas



KHAKI



BLACK



NAVY



OLIVE

TECH SPECS

ONE SIZE · 260 GSM · FULLY CLOSED WITH BUCKLE

FEATURES

MID VISOR · GARMENT WASHING

SUSTAINABLE FEATURES

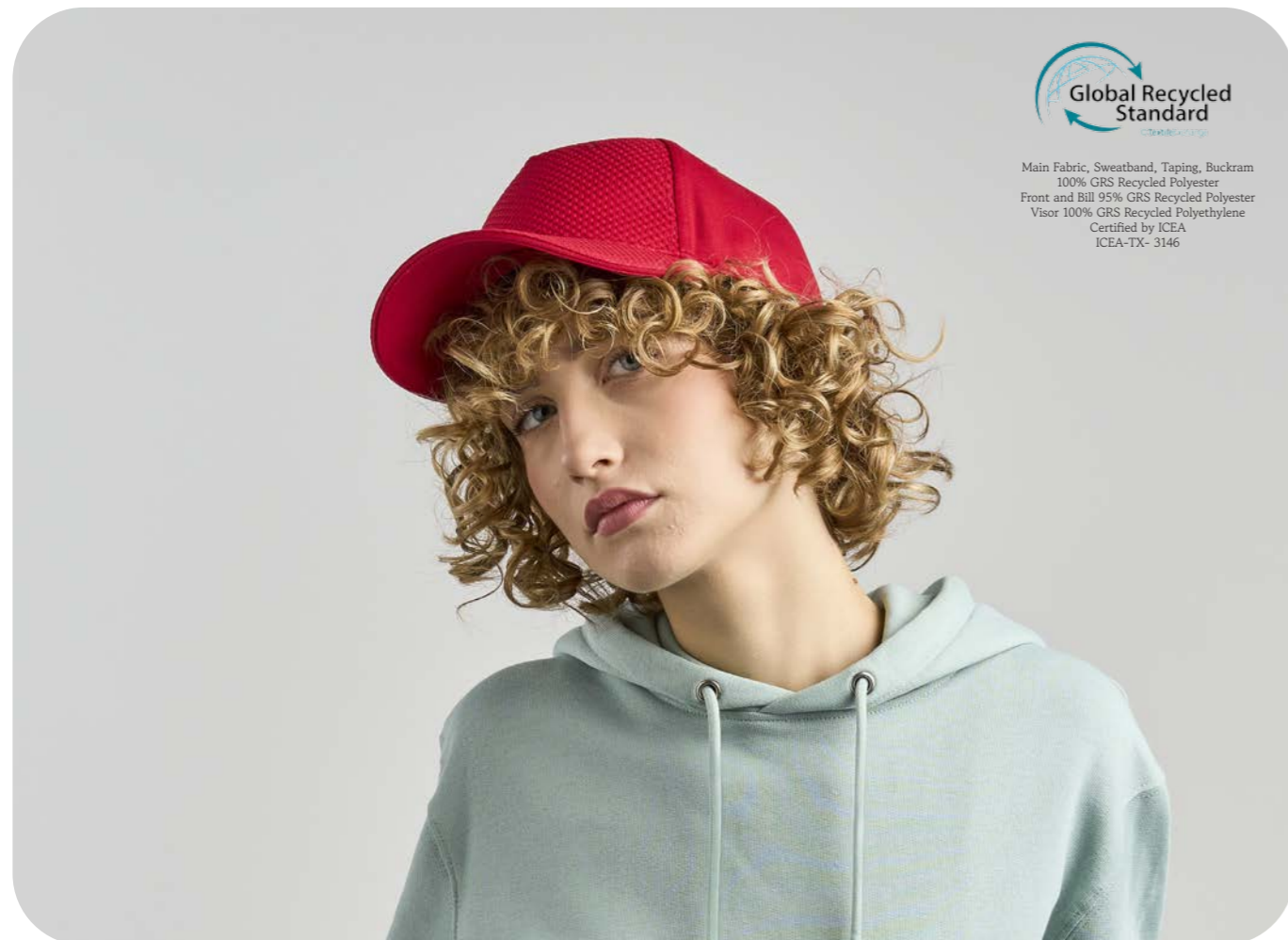
SELF FABRIC SWEATBAND · RECYCLED VISOR
 IMPACT REDUCTION: -20 CO₂eq* · 1,050 kg CO₂ eq

Gear-S

- Main Fabric: 100% recycled polyester
- Front & Bill: 95% recycled polyester - 5% elastane
- Texture: debossed



TECH SPECS	ONE SIZE · 230 GSM · HOOK & LOOP CLOSURE
FEATURES	CURVED VISOR
SUSTAINABLE FEATURES	RECYCLED BUCKRAM · R-PET SWEATBAND · RETRAZE® RECYCLED VISOR IMPACT REDUCTION: -15% CO ₂ eq* · 0,600 kg CO ₂ eq



Main Fabric, Sweatband, Taping, Buckram
100% GRS Recycled Polyester
Front and Bill 95% GRS Recycled Polyester
Visor 100% GRS Recycled Polyethylene
Certified by ICEA
ICEA-TX- 3146

Geo

- Main Fabric: 100% recycled polyester
- Texture: twill



TECH SPECS	ONE SIZE · 200 GSM
SUSTAINABLE FEATURES	SELF FABRIC SWEATBAND · IMPACT REDUCTION: -20% CO ₂ eq* 0,607 kg CO ₂ eq



100% GRS Recycled Polyester
Certified by ICEA
ICEA-TX-3146

Ghibli

- Main Fabric: 100% recycled nylon
- Lining: 100% recycled polyester



TECH SPECS	ONE SIZE · 120 GSM
FEATURES	REVERSIBLE · WATER RESISTANT - PFC FREE
SUSTAINABLE FEATURES	FULL R-PET FLEECE LINING · IMPACT REDUCTION: -46% CO ₂ eq* 0,582 kg CO ₂ eq



Globe Trotter-S

- Main Fabric: 80% organic cotton - 20% recycled cotton
- Texture: canvas



TECH SPECS	S/M - L/XL · 260 GSM
FEATURES	METAL EYELETS · GARMENT WASHING
SUSTAINABLE FEATURES	SELF FABRIC SWEATBAND · IMPACT REDUCTION: -22% CO ₂ eq* 1,860 kg CO ₂ eq

Helpy-S

- Main Fabric: 100% recycled polyester
- Texture: twill



TECH SPECS	ONE SIZE · 200 GSM · HOOK & LOOP CLOSURE REFLECT STRAP
FEATURES	CURVED VISOR · WATER RESISTANT - PFC FREE · UPF 50+ PROTECTION REFLECTIVE BAND · CONTRAST COLOR UNDERBILL
SUSTAINABLE FEATURES	RECYCLED BUCKRAM · RETRAZE® RECYCLED VISOR · R-PET SWEATBAND IMPACT REDUCTION: -21% CO ₂ eq* · 0,555 kg CO ₂ eq



Hit-S

- Main Fabric: 80% organic cotton - 20% recycled cotton
- Texture: twill



TECH SPECS	ONE SIZE · 270 GSM · SUNDAY BUCKLE CLOSURE
FEATURES	CURVED VISOR
SUSTAINABLE FEATURES	RECYCLED BUCKRAM · RETRAZE® RECYCLED VISOR SELF FABRIC SWEATBAND · IMPACT REDUCTION: -22% CO ₂ eq* 0,951 kg CO ₂ eq



Holly

• Main Fabric: 100% Polylana® polyester



TECH SPECS

ONE SIZE · 58 G

SUSTAINABLE FEATURES

POLYLANA® · IMPACT REDUCTION: -55% CO₂eq* · 0,487 kg CO₂ eq



Hotty-S

• Main Fabric: 100% recycled polyester



TECH SPECS

28x25 CM · 230 GSM · ELASTIC STRING WITH PLASTIC STOPPER

FEATURES

COMPACT DESIGN

SUSTAINABLE FEATURES

IMPACT REDUCTION: -21% CO₂eq* · 0,438 kg CO₂ eq

Isar

- Main Fabric: 100% recycled polyester
- Texture: jacquard



TECH SPECS	ONE SIZE · 100 GSM · HOOK & LOOP CLOSURE
FEATURES	MID VISOR · UNSTRUCTURED FRONT PANEL
SUSTAINABLE FEATURES	R-PET SWEATBAND · RETRAZE® RECYCLED VISOR IMPACT REDUCTION: -20% CO ₂ eq* · 0,436 kg CO ₂ eq



Global Recycled Standard
©TextileExchange

Main Fabric, Sweatband, Taping
100% GRS Recycled Polyester
Visor 100% GRS Recycled Polyethylene

Certified by ICEA
ICEA-TX-3146

James

- Main Fabric: 100% recycled polyester
- Texture: twill



TECH SPECS	ONE SIZE · 200 GSM · RECYCLED SNAPBACK CLOSURE
FEATURES	FLAT VISOR
SUSTAINABLE FEATURES	RECYCLED BUCKRAM · RETRAZE® RECYCLED VISOR SELF FABRIC SWEATBAND · IMPACT REDUCTION: -21% CO ₂ eq* 0,587 kg CO ₂ eq



Global Recycled Standard
©TextileExchange

Main Fabric, Taping, Buckram
100% GRS Recycled Polyester
Visor 100% GRS Recycled Polyethylene

Certified by ICEA
ICEA-TX-3146

Joshua

- Main Fabric: 100% recycled polyester
- Texture: twill



TECH SPECS	ONE SIZE · 200 GSM · HOOK & LOOP CLOSURE
FEATURES	CURVED VISOR
SUSTAINABLE FEATURES	RECYCLED BUCKRAM · RETRAZE® RECYCLED VISOR SELF FABRIC SWEATBAND · IMPACT REDUCTION: -21% CO ₂ eq* 0,542 kg CO ₂ eq



Global Recycled Standard
©TextileExchange

Main Fabric, Taping, Buckram
100% GRS Recycled Polyester
Visor 100% GRS Recycled Polyethylene

Certified by ICEA
ICEA-TX-3146



Global Recycled Standard
©TextileExchange

Main Fabric 97% GRS Recycled Polyester
Sweatband, Taping, Buckram
100% GRS Recycled Polyester
Visor 100% GRS Recycled Polyethylene

Certified by ICEA
ICEA-TX-3146

Kai

- Main Fabric: 97% recycled polyester - 3% elastane



TECH SPECS	ONE SIZE · 195 GSM · HOOK&LOOP CLOSURE PLASTIC LOOP ELASTIC STRING
FEATURES	MID VISOR · UPF50+ · SOFT CROWN · WATER RESISTANT - PFC FREE UNSTRUCTURED FRONT PANEL
SUSTAINABLE FEATURES	RETRAZE® RECYCLED VISOR · RECYCLED DRY-TECH SWEATBAND IMPACT REDUCTION: -19% CO ₂ eq* · 0,543 kg CO ₂ eq

Kid Fraser

- Main Fabric: 100% organic cotton
- Texture: twill



TECH SPECS	KIDS SIZE · 260 GSM · HOOK & LOOP CLOSURE
FEATURES	MID VISOR · GARMENT WASHING · UNSTRUCTURED FRONT PANEL
SUSTAINABLE FEATURES	SELF FABRIC SWEATBAND · IMPACT REDUCTION: -12% CO ₂ eq* 0,703 kg CO ₂ eq



Organic
Certified by ICEA
GOTS-11099

Kid Mayo

- Main Fabric: 80% organic cotton - 20% recycled cotton
- Texture: twill



TECH SPECS	KIDS SIZE · 270 GSM
SUSTAINABLE FEATURES	SELF FABRIC SWEATBAND · IMPACT REDUCTION: -20% CO ₂ eq* 1,130 kg CO ₂ eq

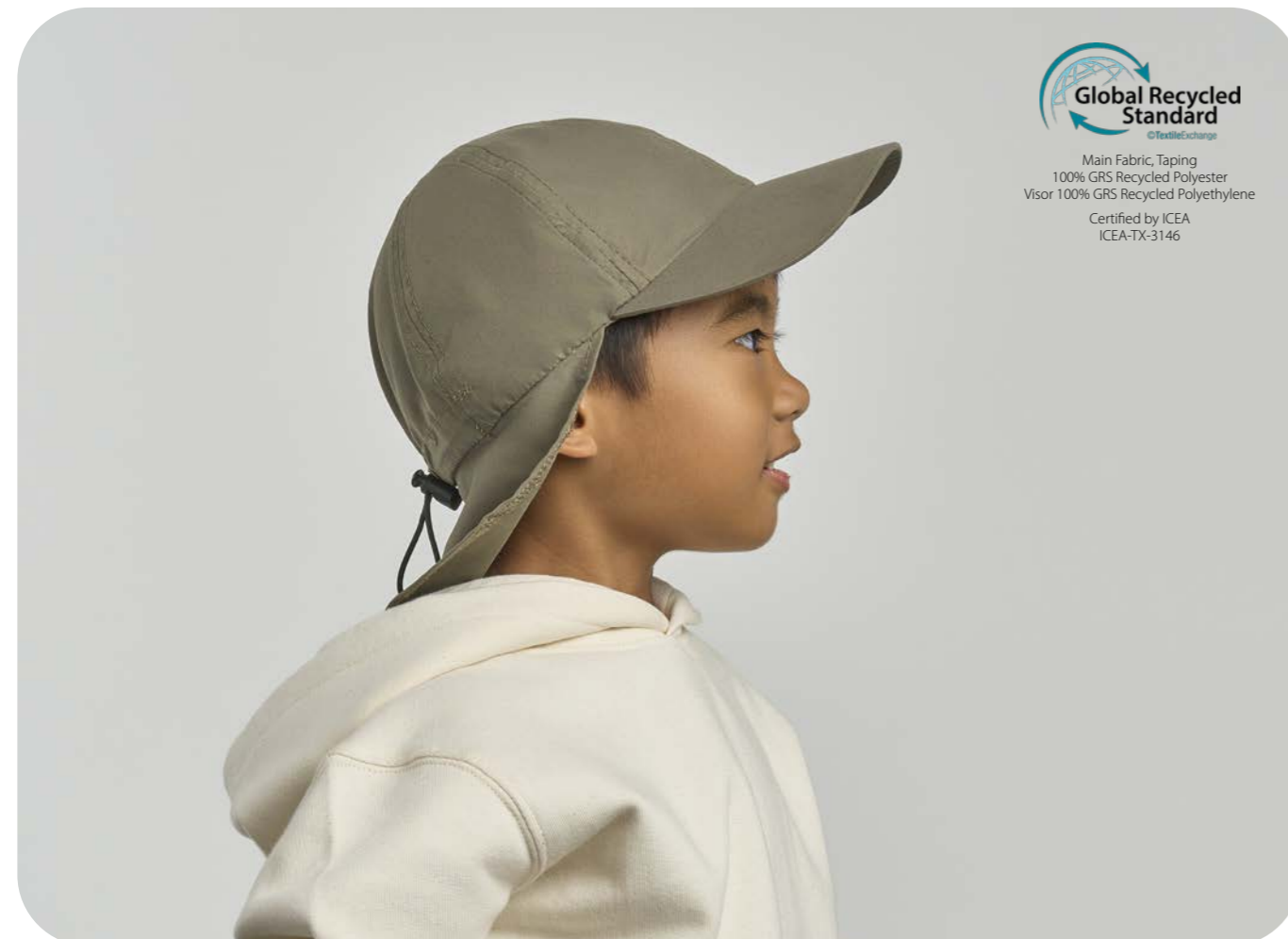


Kid Nomad-S

- Main Fabric: 100% recycled polyester
- Texture: microfiber



TECH SPECS	KIDS SIZE · 120 GSM · FULLY CLOSED WITH RECYCLED CLAMP
FEATURES	CURVED VISOR · UPF50+ · UNSTRUCTURED FRONT PANEL
SUSTAINABLE FEATURES	RETRAZE® RECYCLED VISOR · SELF FABRIC SWEATBAND IMPACT REDUCTION: -19% CO ₂ eq* · 0,403 kg CO ₂ eq



Global Recycled Standard
©TextileExchange

Main Fabric, Taping
100% GRS Recycled Polyester
Visor 100% GRS Recycled Polyethylene
Certified by ICEA
ICEA-TX-3146



Global Recycled Standard
©TextileExchange

Main Fabric, Mesh, Sweatband, Taping
100% GRS Recycled Polyester
Visor 100% GRS Recycled Polyethylene
Certified by ICEA
ICEA-TX- 3146

Kid Rapper-S

- Main Fabric: 100% recycled polyester
- Side & Back: 100% recycled polyester
- Texture: piqué



TECH SPECS	KIDS SIZE · 180 GSM · RECYCLED SNAPBACK CLOSURE
FEATURES	CURVED VISOR · PADDED FRONT PANEL
SUSTAINABLE FEATURES	R-PET SWEATBAND · RETRAZE® RECYCLED VISOR IMPACT REDUCTION: -17% CO ₂ eq* · 0,445 kg CO ₂ eq

Kid Recy Five

- Main Fabric: 100% recycled polyester
- Texture: twill



TECH SPECS	KIDS SIZE · 220 GSM · HOOK & LOOP CLOSURE
FEATURES	CURVED VISOR
SUSTAINABLE FEATURES	IMPACT REDUCTION: -11% CO ₂ eq* · 0,398 kg CO ₂ eq



Kid Snap Back-S

- Main Fabric: 100% recycled polyester
- Texture: twill



TECH SPECS	KIDS SIZE · 300 GSM · RECYCLED SNAPBACK CLOSURE
FEATURES	FLAT VISOR
SUSTAINABLE FEATURES	RECYCLED BUCKRAM · R-PET SWEATBAND · RETRAZE® RECYCLED VISOR IMPACT REDUCTION: -22% CO ₂ eq* · 0,629 kg CO ₂ eq



Main Fabric, Sweatband, Taping, Buckram
100% GRS Recycled Polyester
Visor 100% GRS Recycled Polyethylene
Certified by ICEA
ICEA-TX-3146

Kid Star-S

- Main Fabric: 100% organic cotton
- Texture: twill



TECH SPECS	KIDS SIZE · 260 GSM · HOOK & LOOP CLOSURE
FEATURES	CURVED VISOR
SUSTAINABLE FEATURES	RECYCLED BUCKRAM · RETRAZE® RECYCLED VISOR SELF FABRIC SWEATBAND · IMPACT REDUCTION: -14% CO ₂ eq* 0,766 kg CO ₂ eq



Organic
Certified by ICEA
GOTS-11099



Kid Wind-S

- Main Fabric: 100% recycled polyester



TECH SPECS	KIDS SIZE · 58 G
SUSTAINABLE FEATURES	IMPACT REDUCTION: -21% CO ₂ eq* · 0,510 kg CO ₂ eq

Kid Yala

• Main Fabric: 100% organic cotton



TECH SPECS	KIDS SIZE · 50 G
SUSTAINABLE FEATURES	IMPACT REDUCTION: -9% CO ₂ eq* · 0,690 kg CO ₂ eq



Organic Certified by ICEA GOTS-11099

Liberty Sandwich-S

• Main Fabric: 80% organic cotton - 20% recycled cotton
• Texture: twill



TECH SPECS	ONE SIZE · 270 GSM · SNAP BUCKLE WITH SEWN HOLE
FEATURES	CURVED VISOR · SANDWICH ON VISOR · BRUSHED
SUSTAINABLE FEATURES	RECYCLED BUCKRAM · R-PET SWEATBAND · RETRAZE® RECYCLED VISOR IMPACT REDUCTION: -22% CO ₂ eq* · 0,759 kg CO ₂ eq



Sweatband, Taping, Buckram
100% GRS Recycled Polyester
Visor 100% GRS Recycled Polyethylene
Certified by ICEA
ICEA-TX-3146

Maple

• Main Fabric: 100% Polylana® polyester



TECH SPECS	ONE SIZE · 80 G
SUSTAINABLE FEATURES	IMPACT REDUCTION: -56% CO ₂ eq* · 0,648 kg CO ₂ eq



Sweatband, Buckram
100% GRS Recycled Polyester
Visor 100% GRS Recycled Polyethylene
Certified by ICEA
ICEA-TX-3146



Maui

• Main Fabric: 100% textile-to-textile recycled polyester
• Texture: microfiber



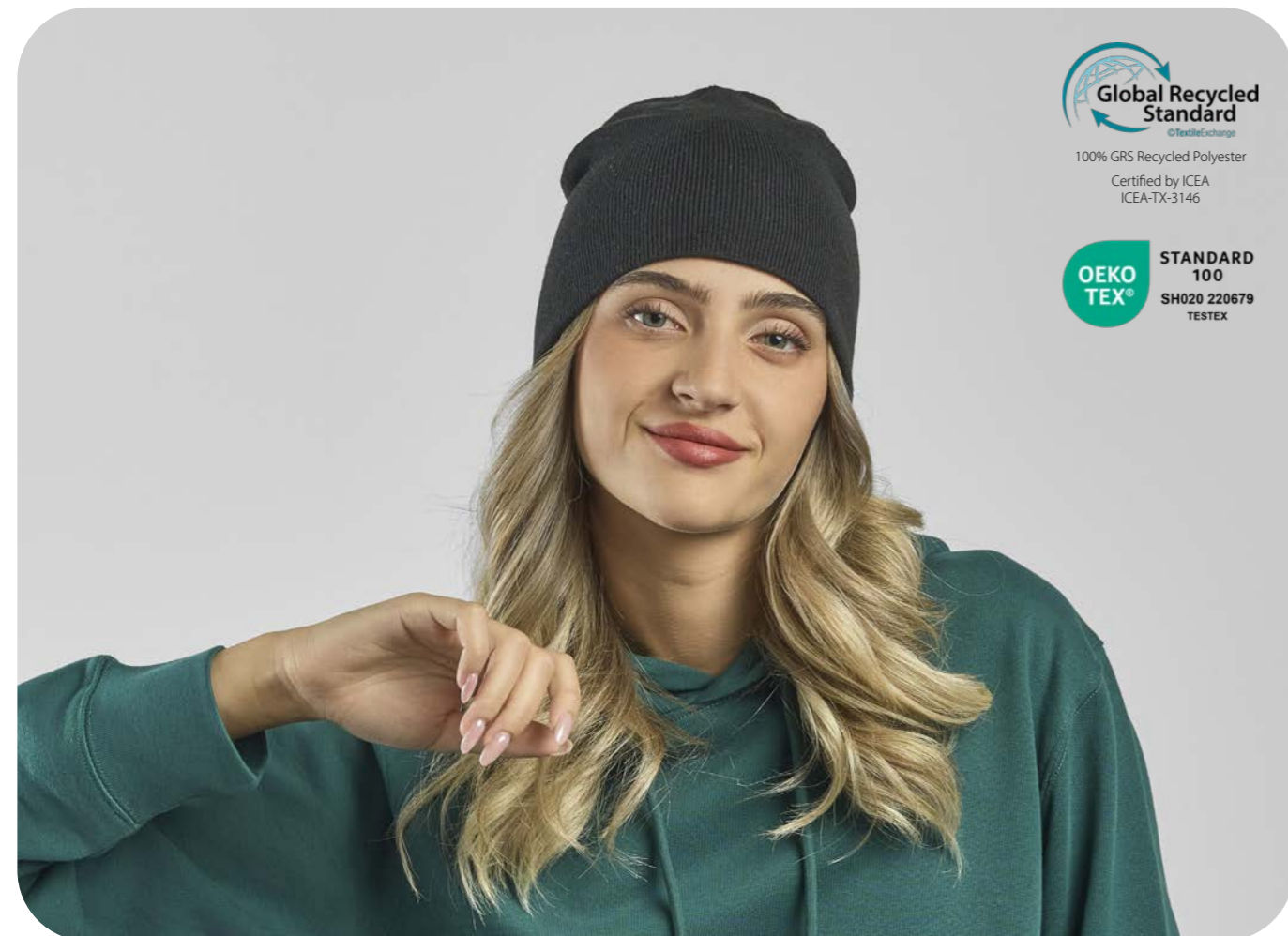
TECH SPECS	ONE SIZE · 105 GSM · HOOK&LOOP WITH PLASTIC LOOP ELASTIC STRING
FEATURES	MID VISOR · MOISTURE-WICKING · LASER HOLES UNSTRUCTURED FRONT PANEL
SUSTAINABLE FEATURES	RETRAZE® RECYCLED VISOR · RECYCLED DRY-TECH SWEATBAND IMPACT REDUCTION: -19% CO ₂ eq* · 0,415 kg CO ₂ eq

Moover-S

• Main Fabric: 100% recycled polyester



TECH SPECS	ONE SIZE · 60 G
SUSTAINABLE FEATURES	IMPACT REDUCTION: -30% CO ₂ eq* · 0,335 kg CO ₂ eq



Nelson

• Main Fabric: 100% organic cotton



TECH SPECS	ONE SIZE · 78 G
SUSTAINABLE FEATURES	IMPACT REDUCTION: -9% CO ₂ eq* · 0,932 kg CO ₂ eq



Nomad-S

- Main Fabric: 100% recycled polyester
- Texture: microfiber



TECH SPECS	ONE SIZE · 120 GSM · FULLY CLOSED WITH RECYCLED CLAMP
FEATURES	CURVED VISOR · UPF50+ · UNSTRUCTURED FRONT PANEL
SUSTAINABLE FEATURES	RETRAZE® RECYCLED VISOR · SELF FABRIC SWEATBAND IMPACT REDUCTION: -20% CO ₂ eq* · 0,459 kg CO ₂ eq



Main Fabric, Taping
100% GRS Recycled Polyester
Visor 100% GRS Recycled Polyethylene
Certified by ICEA
ICEA-TX-3146



POLYLANA®

Oak

- Main Fabric: 100% Polylana® polyester



TECH SPECS	ONE SIZE · 102 G
SUSTAINABLE FEATURES	IMPACT REDUCTION: -56% CO ₂ eq* · 0,804 kg CO ₂ eq

Pico

• Main Fabric: 100% recycled nylon



TECH SPECS	ONE SIZE · 120 GSM · ADJUSTABLE STRING WITH STOPPER
FEATURES	SOFT CROWN · COMPACT DESIGN · WATER RESISTANT - PFC FREE
SUSTAINABLE FEATURES	RECYCLED DRY-TECH SWEATBAND · IMPACT REDUCTION: -47% CO ₂ eq* 0,470 kg CO ₂ eq



Main Fabric 100% GRS Recycled Nylon
Sweatband, Taping
100% GRS Recycled Polyester
Certified by ICEA
ICEA-TX-3146

Pier-S

• Main Fabric: 100% recycled polyester
• Lining: 100% recycled polyester



TECH SPECS	ONE SIZE · 85 G
SUSTAINABLE FEATURES	FULL LINING IN RECYCLED FLEECE · POLARTEC® IMPACT REDUCTION: -23% CO ₂ eq* · 0,699 kg CO ₂ eq



100% GRS Recycled Polyester
Certified by ICEA
ICEA-TX- 3146

Pilot-S

- Main Fabric: 80% organic cotton - 20% recycled cotton
- Texture: twill



TECH SPECS	ONE SIZE · 355 GSM · FULL METAL BUCKLE WITH SEWN HOLE
FEATURES	CURVED VISOR · HEAVY BRUSHED
SUSTAINABLE FEATURES	RECYCLED BUCKRAM · R-PET SWEATBAND · RETRAZE® RECYCLED VISOR IMPACT REDUCTION: -22% CO ₂ eq* · 0,932 kg CO ₂ eq



Global Recycled Standard
©TextileExchange

Sweatband, Taping, Buckram
100% GRS Recycled Polyester
Visor 100% GRS Recycled Polyethylene

Certified by ICEA
ICEA-TX-3146



Global Recycled Standard
©TextileExchange

Sweatband, Taping, Buckram
100% GRS Recycled Polyester
Visor 100% GRS Recycled Polyethylene

Certified by ICEA
ICEA-TX-3146

Pilot Piping Sandwich-S

- Main Fabric: 80% organic cotton - 20% recycled cotton
- Texture: twill



TECH SPECS	ONE SIZE · 355 GSM · FULL METAL BUCKLE WITH METAL HOLE
FEATURES	CURVED VISOR · PIPING ON VISOR AND ON BACK · HEAVY BRUSHED CONTRAST COLOR UNDERBILL
SUSTAINABLE FEATURES	RECYCLED BUCKRAM · R-PET SWEATBAND · RETRAZE® RECYCLED VISOR IMPACT REDUCTION: -20% CO ₂ eq* · 0,938 kg CO ₂ eq

Pitch

- Main Fabric: 100% recycled polyester
- Texture: microtwill



DARK GREY BLACK NAVY

TECH SPECS	S/M - L/XL · 200 GSM · FULLY CLOSED ON BACK
FEATURES	MID VISOR · STRETCHABLE FABRIC
SUSTAINABLE FEATURES	RETRAZE® RECYCLED VISOR · RECYCLED BUCKRAM RECYCLED ELASTIC SWEATBAND · IMPACT REDUCTION: -22% CO ₂ eq* 0,507 kg CO ₂ eq



Global Recycled Standard
©TextileExchange
 Main Fabric, Taping, Buckram
 100% GRS Recycled Polyester
 Sweatband 91% GRS Recycled Polyester
 Visor 100% GRS Recycled Polyethylene
 Certified by ICEA
 ICEA-TX- 3146

Powell

- Main Fabric: 50% recycled cotton - 50% virgin cotton
- Texture: twill



WHITE DARK GREY KHAKI
 BLACK NAVY OLIVE

TECH SPECS	ONE SIZE · 260 GSM
SUSTAINABLE FEATURES	SELF FABRIC SWEATBAND · IMPACT REDUCTION: -18% CO ₂ eq* 0,842 kg CO ₂ eq



Global Recycled Standard
©TextileExchange
 50% GRS Recycled Cotton
 Certified by ICEA
 ICEA-TX-3146

Pure

• Main Fabric: 100% Polylana® polyester



TECH SPECS	ONE SIZE · 90 G
SUSTAINABLE FEATURES	IMPACT REDUCTION: -55% CO ₂ eq* · 0,731 kg CO ₂ eq



Main Fabric, Lining, Sweatband, Taping
100% GRS Recycled Polyester
Visor 100% GRS Recycled Polyethylene
Certified by ICEA
ICEA-TX-3146



Rainy-S

- Main Fabric: 100% recycled polyester
- Lining: 100% recycled polyester
- Texture: ripstop



TECH SPECS	ONE SIZE · 85 GSM · SUNDAY BUCKLE
FEATURES	CURVED VISOR · HOT SEALED TAPING · WATER RESISTANT - PFC FREE UNSTRUCTURED FRONT PANEL
SUSTAINABLE FEATURES	RETRAZE® RECYCLED VISOR · R-PET MESH LINING RECYCLED DRY-TECH SWEATBAND IMPACT REDUCTION: -20% CO ₂ eq* 0,445 kg CO ₂ eq

Rapper-S

- Front & Bill: 100% recycled polyester
- Side & Back: 100% recycled polyester
- Texture: piqué



TECH SPECS	ONE SIZE · 180 GSM · RECYCLED SNAPBACK CLOSURE
FEATURES	MID VISOR · PADDED FRONT PANEL
SUSTAINABLE FEATURES	R-PET SWEATBAND · RETRAZE® RECYCLED VISOR IMPACT REDUCTION: -18% CO ₂ eq* · 0,471 kg CO ₂ eq



Rapper Canvas-S

- Main Fabric: 100% recycled polyester
- Side&back: 100% recycled polyester
- Texture: canvas



TECH SPECS	ONE SIZE · 270 GSM · RECYCLED SNAPBACK CLOSURE
FEATURES	MID VISOR
SUSTAINABLE FEATURES	RECYCLED BUCKRAM · RETRAZE® RECYCLED VISOR SELF FABRIC SWEATBAND · IMPACT REDUCTION: -21% CO ₂ eq* 0,558 kg CO ₂ eq



Rapper Cotton-S

- Main Fabric: 80% organic cotton - 20% recycled cotton
- Side & Back: 100% recycled polyester
- Texture: twill



TECH SPECS	ONE SIZE · 270 GSM · RECYCLED SNAPBACK CLOSURE
FEATURES	CURVED VISOR
SUSTAINABLE FEATURES	RECYCLED BUCKRAM · RECYCLED POLYESTER SWEATBAND · RETRAZE® RECYCLED VISOR · IMPACT REDUCTION: -22% CO ₂ eq* · 0,615 kg CO ₂ eq



Rapper Suede-S

- Main Fabric: 81% recycled polyester - 19% polyester
- Side & Back: 100% recycled polyester
- Underbill: 100% recycled polyester
- Texture: suede



TECH SPECS	ONE SIZE · 135 GSM · RECYCLED SNAPBACK CLOSURE
FEATURES	MID VISOR
SUSTAINABLE FEATURES	RECYCLED BUCKRAM · R-PET SWEATBAND · RETRAZE® RECYCLED VISOR · IMPACT REDUCTION: -20% CO ₂ eq* · 0,486 kg CO ₂ eq

Ray-S

- Main Fabric: 100% recycled polyester
- Texture: microtwill



TECH SPECS	ONE SIZE · 106 GSM · RECYCLED RUBBER HOOK & LOOP CLOSURE
FEATURES	MID VISOR · UPF50+ · WATER RESISTANT - PFC FREE
SUSTAINABLE FEATURES	RECYCLED BUCKRAM · RETRAZE® RECYCLED VISOR RECYCLED DRY-TECH SWEATBAND · IMPACT REDUCTION: -20% CO ₂ eq* 0,534 kg CO ₂ eq



Main Fabric, Sweatband, Taping, Buckram
100% GRS Recycled Polyester
Visor 100% GRS Recycled Polyethylene
Certified by ICEA
ICEA-TX-3146

Record-S

- Front & Bill: 100% recycled polyester
- Side & Back: 100% recycled polyester
- Texture: twill



TECH SPECS	ONE SIZE · 200 GSM · RECYCLED SNAPBACK CLOSURE
FEATURES	MID VISOR · PADDED FRONT PANEL
SUSTAINABLE FEATURES	RETRAZE® RECYCLED VISOR · SELF FABRIC SWEATBAND IMPACT REDUCTION: -19% CO ₂ eq* · 0,542 kg CO ₂ eq



Main Fabric, Mesh, Sweatband, Taping
100% GRS Recycled Polyester
Visor 100% GRS Recycled Polyethylene
Certified by ICEA
ICEA-TX-3146

Recy Beanie

• Main Fabric: 50% recycled polyester - 50% acrylic



TECH SPECS	ONE SIZE · 48 G
SUSTAINABLE FEATURES	IMPACT REDUCTION: -26% CO ₂ eq* · 0,674 kg CO ₂ eq



Main Fabric, Sweatband, Taping, Buckram
100% GRS Recycled Polyester
Visor 100% GRS Recycled Polyethylene
Certified by ICEA
ICEA-TX-3146



Recy Feel

• Main Fabric: 100% recycled polyester
• Texture: microfiber



TECH SPECS	ONE SIZE · 115 GSM · RECYCLED SNAPBACK CLOSURE
FEATURES	MID VISOR
SUSTAINABLE FEATURES	RECYCLED DRY-TECH SWEATBAND · RETRAZE® RECYCLED VISOR IMPACT REDUCTION: -20% CO ₂ eq* · 0,457 kg CO ₂ eq

Recy Five

- Main Fabric: 100% recycled polyester
- Texture: twill



TECH SPECS	ONE SIZE · 220 GSM · HOOK & LOOP CLOSURE
FEATURES	CURVED VISOR
SUSTAINABLE FEATURES	IMPACT REDUCTION: -12% CO ₂ eq* · 0,479 kg CO ₂ eq



Recy Five Italia

- Main Fabric: 100% recycled polyester
- Texture: twill



TECH SPECS	ONE SIZE · 220 GSM · HOOK & LOOP CLOSURE
FEATURES	CURVED VISOR · HALF PIPING ON VISOR
SUSTAINABLE FEATURES	IMPACT REDUCTION: -12% CO ₂ eq* · 0,479 kg CO ₂ eq



Recy Five Piping

- Main Fabric: 100% recycled polyester
- Construction: twill



TECH SPECS	ONE SIZE · 220 GSM · HOOK & LOOP CLOSURE
FEATURES	CURVED VISOR · PIPING ON VISOR
SUSTAINABLE FEATURES	IMPACT REDUCTION: -12% CO ₂ eq* · 0,465 kg CO ₂ eq



Recy Six

- Main Fabric: 100% recycled polyester
- Construction: twill



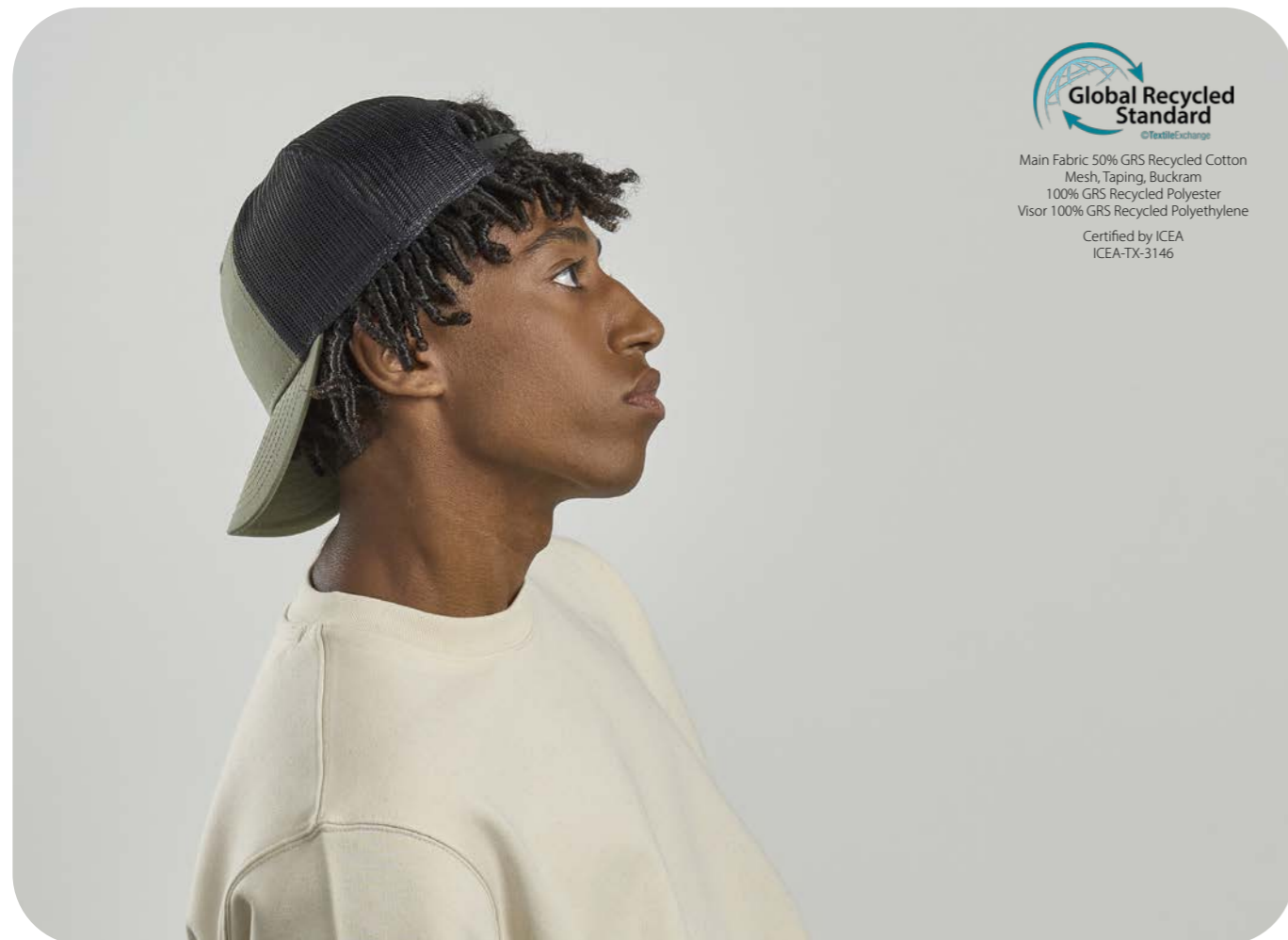
TECH SPECS	ONE SIZE · 220 GSM · HOOK & LOOP CLOSURE
FEATURES	CURVED VISOR
SUSTAINABLE FEATURES	IMPACT REDUCTION: -12% CO ₂ eq* · 0,477 kg CO ₂ eq

Recy Three

- Main Fabric: 50% recycled cotton - 50% virgin cotton
- Texture: canvas



TECH SPECS	ONE SIZE · 260 GSM · RECYCLED SNAPBACK CLOSURE
FEATURES	MID VISOR
SUSTAINABLE FEATURES	RECYCLED BUCKRAM · RETRAZE® RECYCLED VISOR SELF FABRIC SWEATBAND · IMPACT REDUCTION: -20% CO ₂ eq* 0,617 kg CO ₂ eq



Main Fabric 50% GRS Recycled Cotton
Mesh, Taping, Buckram
100% GRS Recycled Polyester
Visor 100% GRS Recycled Polyethylene
Certified by ICEA
ICEA-TX-3146

Reflect-S

- Main Fabric: 100% recycled polyester
- Texture: twill



TECH SPECS	ONE SIZE · 200 GSM · SNAP BUCKLE WITH SEWN HOLE
FEATURES	CURVED VISOR · WATER RESISTANT - PFC FREE · REFLECTIVE PIPING
SUSTAINABLE FEATURES	RETRAZE® RECYCLED VISOR · RECYCLED BUCKRAM SELF FABRIC SWEATBAND · IMPACT REDUCTION: -21% CO ₂ eq* 0,566 kg CO ₂ eq



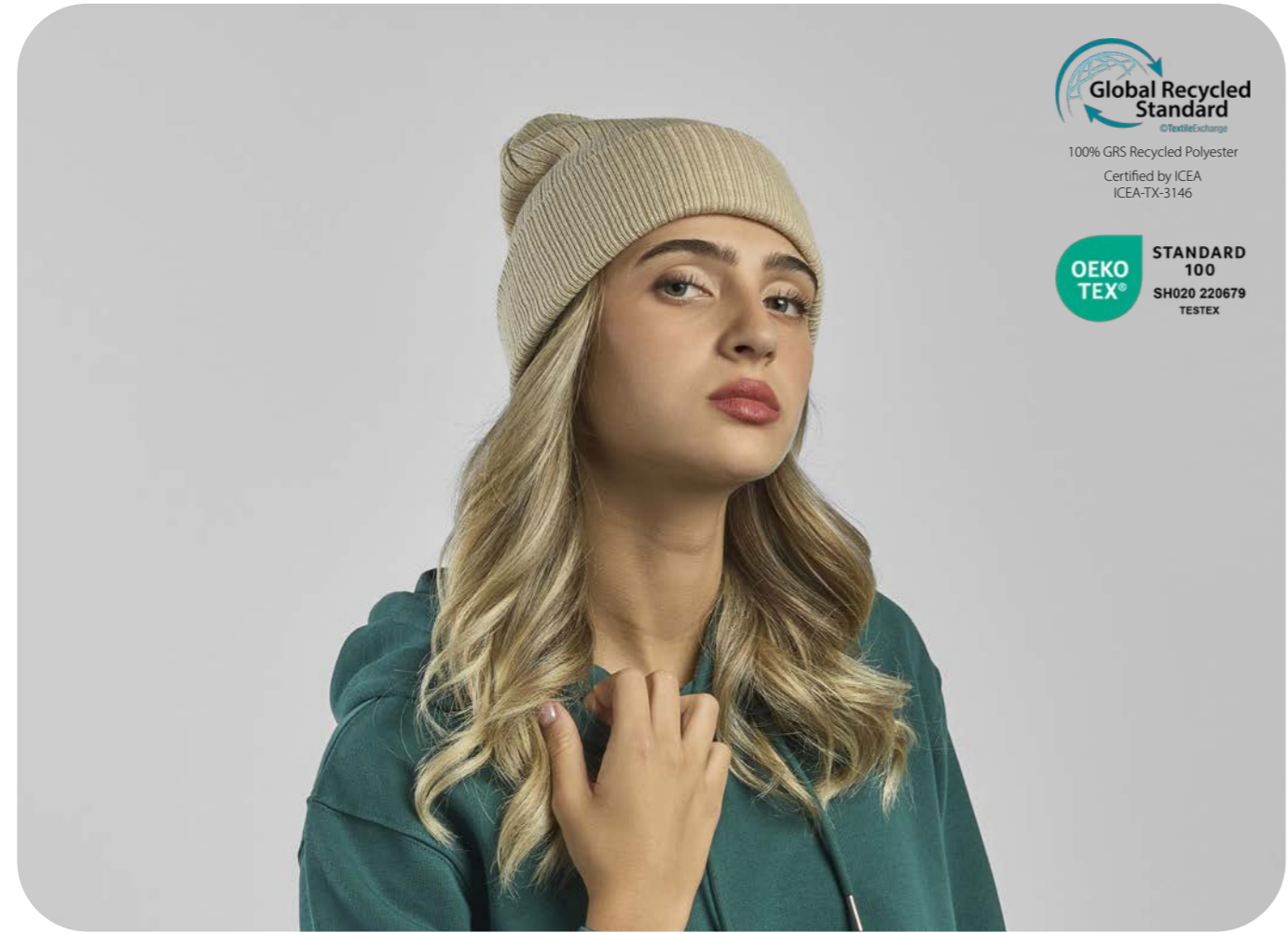
Main Fabric, Taping, Buckram
100% GRS Recycled Polyester
Visor 100% GRS Recycled Polyethylene
Certified by ICEA
ICEA-TX-3146

Rio

• Main Fabric: 100% recycled polyester



TECH SPECS	ONE SIZE · 63 G
SUSTAINABLE FEATURES	IMPACT REDUCTION: -22% CO ₂ eq* · 0,552 kg CO ₂ eq



Global Recycled Standard
©TextileExchange
 100% GRS Recycled Polyester
 Certified by ICEA
 ICEA-TX-3146

OEKO TEX®
 STANDARD 100
 SH020 220679
 TESTEX



Global Recycled Standard
©TextileExchange
 Main Fabric 97% GRS Recycled Polyester
 Sweatband 91% GRS Recycled Polyester
 Taping, Buckram 100% GRS Recycled Polyester
 Visor 100% GRS Recycled Polyethylene
 Certified by ICEA
 ICEA-TX-3146

Sand

• Main Fabric: 97% recycled polyester - 3% elastane
 • Texture: miniottoman



TECH SPECS	ONE SIZE · 290 GSM · HOOK&LOOP CLOSURE PLASTIC LOOP ELASTIC STRING
FEATURES	MID VISOR
SUSTAINABLE FEATURES	RETRAZE® RECYCLED VISOR · RECYCLED BUCKRAM RECYCLED ELASTIC SWEATBAND · IMPACT REDUCTION: -20% CO ₂ eq* 0,649 kg CO ₂ eq

Shine

• Main Fabric: 100% recycled polyester



TECH SPECS	ONE SIZE · 76 G
FEATURES	REFLECTIVE YARN
SUSTAINABLE FEATURES	IMPACT REDUCTION: -22% CO ₂ eq* · 0,637 kg CO ₂ eq



Shore

• Main Fabric: 100% recycled polyester



TECH SPECS	ONE SIZE · 80 G
SUSTAINABLE FEATURES	IMPACT REDUCTION: -22% CO ₂ eq* · 0,625 kg CO ₂ eq





Taping, Buckram,
100% GRS Recycled Polyester
Visor 100% GRS Recycled Polyethylene
Certified by ICEA
ICEA-TX-3146



Skye

- Main Fabric: 93% recycled polyester - 7% polyester
- Texture: honeycomb



TECH SPECS	ONE SIZE · 255 GSM · HIGH QUALITY HOOK & LOOP CLOSURE
FEATURES	MID VISOR
SUSTAINABLE FEATURES	RETRAZE® RECYCLED VISOR · DOPE DYEING RECYCLED DRY-TECH SWEATBAND · RECYCLED BUCKRAM IMPACT REDUCTION: -21% CO ₂ eq* · 0,598 kg CO ₂ eq

Shot-S

- Main Fabric: 80% organic cotton - 20% recycled cotton
- Texture: twill



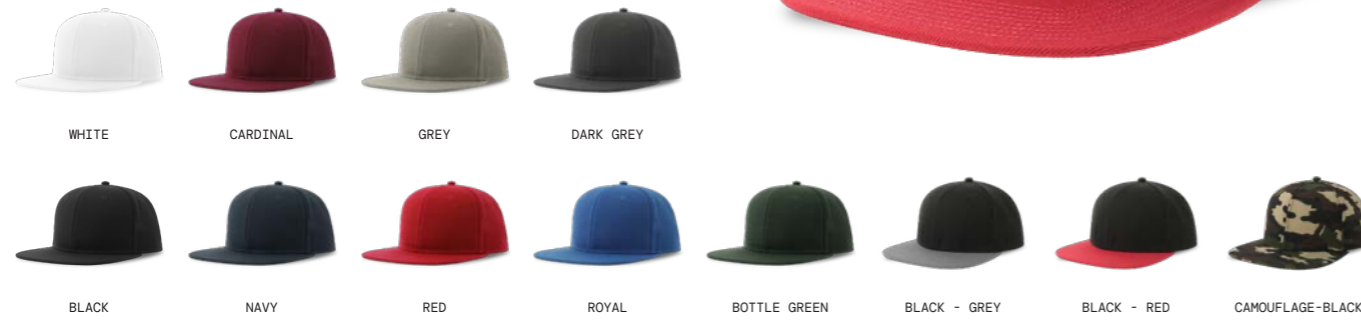
Main Fabric 93% GRS Recycled Polyester
Sweatband, Taping, Buckram
100% GRS Recycled Polyester
Visor 100% GRS Recycled Polyethylene
Certified by ICEA
ICEA-TX-3146



TECH SPECS	ONE SIZE · 270 GSM · SUNDAY BUCKLE CLOSURE
FEATURES	CURVED VISOR
SUSTAINABLE FEATURES	RECYCLED BUCKRAM · SELF FABRIC SWEATBAND RETRAZE® RECYCLED VISOR · IMPACT REDUCTION: -20% CO ₂ eq* 0,962 kg CO ₂ eq

Snap Back-S

- Main Fabric: 100% recycled polyester
- Texture: twill



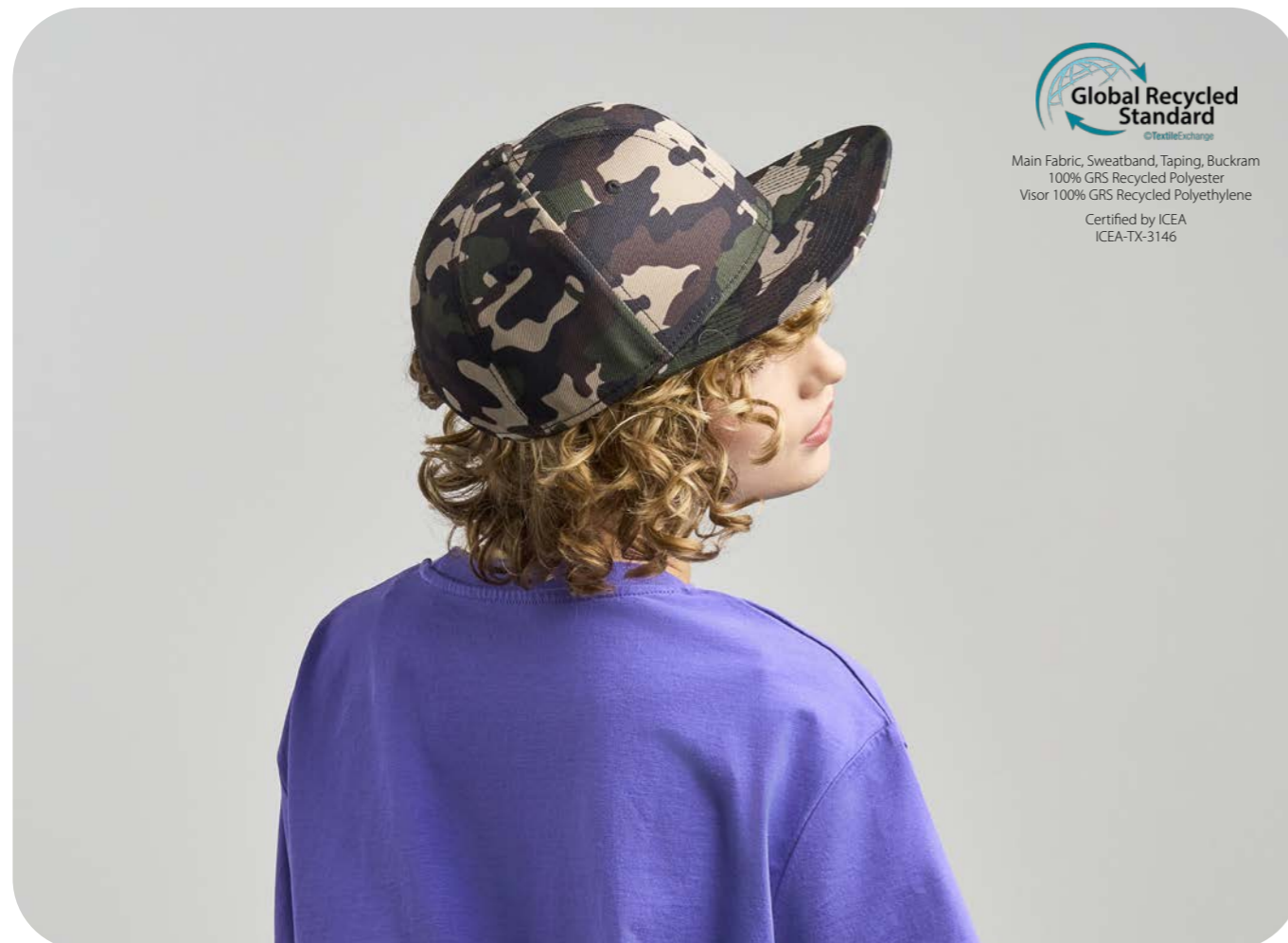
TECH SPECS	ONE SIZE · 300 GSM · RECYCLED SNAPBACK CLOSURE
FEATURES	FLAT VISOR
SUSTAINABLE FEATURES	RECYCLED BUCKRAM · R-PET SWEATBAND · RETRAZE® RECYCLED VISOR IMPACT REDUCTION: -21% CO ₂ eq* · 0,651 kg CO ₂ eq

Snap Five-S

- Main Fabric: 100% recycled polyester
- Texture: twill



TECH SPECS	ONE SIZE · 300 GSM · RECYCLED SNAPBACK CLOSURE
FEATURES	FLAT VISOR
SUSTAINABLE FEATURES	RECYCLED BUCKRAM · R-PET SWEATBAND · RETRAZE® RECYCLED VISOR IMPACT REDUCTION: -22% CO ₂ eq* · 0,656 kg CO ₂ eq

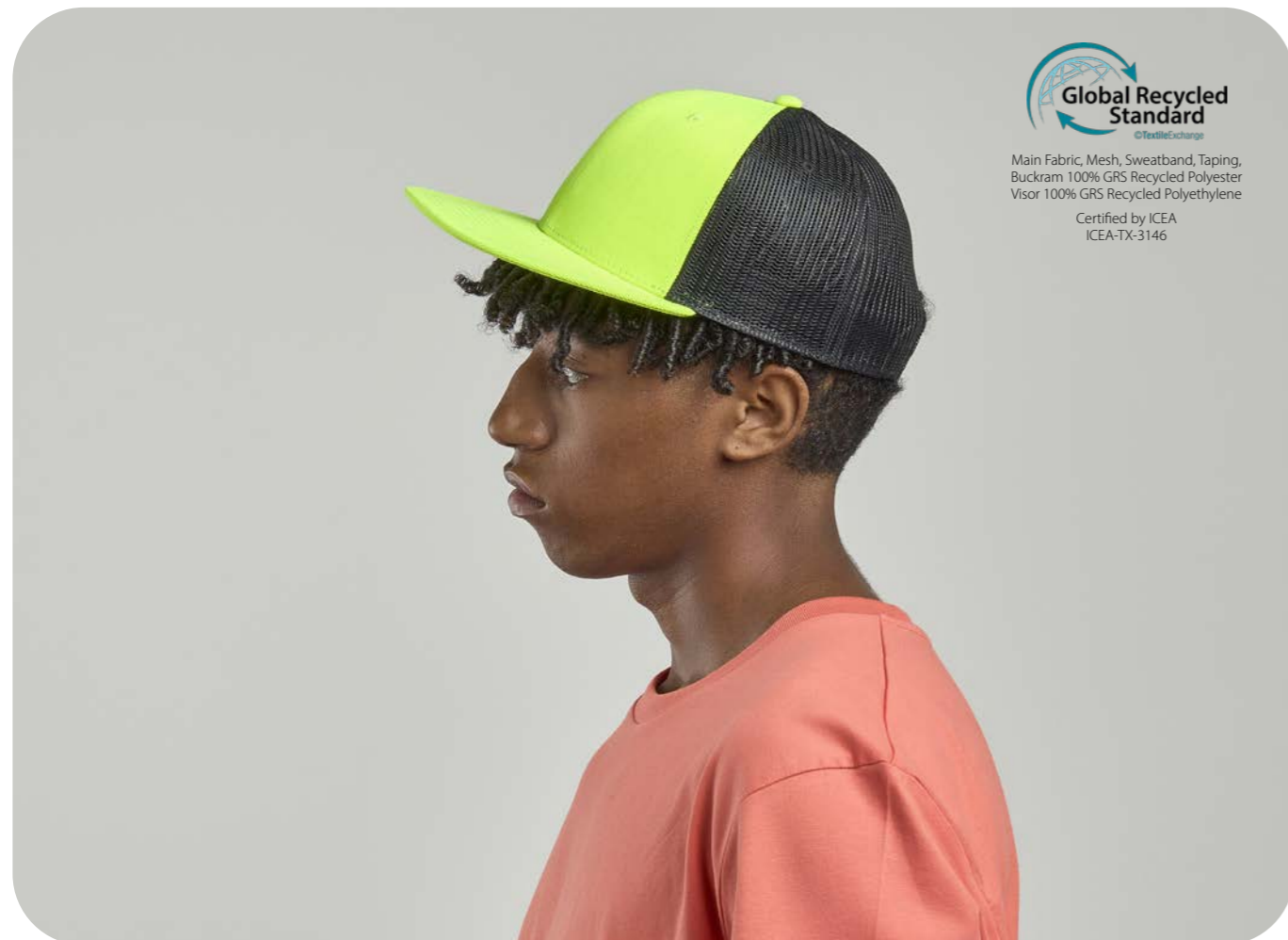


Snap Mesh-S

- Main Fabric: 100% recycled polyester
- Side & back: 100% recycled polyester
- Texture: twill



TECH SPECS	ONE SIZE · 300 GSM · RECYCLED SNAPBACK CLOSURE
FEATURES	FLAT VISOR
SUSTAINABLE FEATURES	RECYCLED BUCKRAM · R-PET SWEATBAND · RETRAZE® RECYCLED VISOR IMPACT REDUCTION: -21% CO ₂ eq* · 0,588 kg CO ₂ eq



Global Recycled Standard
©TextileExchange

Main Fabric, Mesh, Sweatband, Taping, Buckram 100% GRS Recycled Polyester
Visor 100% GRS Recycled Polyethylene

Certified by ICEA
ICEA-TX-3146



Global Recycled Standard
©TextileExchange

Main Fabric, Sweatband, Taping
100% GRS Recycled Polyester
Visor 100% GRS Recycled Polyethylene

Certified by ICEA
ICEA-TX-3146

Snow Flap Stopper-S

- Main Fabric: 100% recycled polyester



TECH SPECS	ONE SIZE · 230 GSM · FULLY CLOSED WITH RECYCLED STOPPER
FEATURES	CURVED VISOR · UNSTRUCTURED FRONT PANEL
SUSTAINABLE FEATURES	R-PET SWEATBAND · RETRAZE® RECYCLED VISOR IMPACT REDUCTION: -22% CO ₂ eq* · 0,819 kg CO ₂ eq

Sonic-S

- Main Fabric: 80% organic cotton - 20% recycled cotton
- Side & Back: 100% recycled polyester
- Texture: twill



TECH SPECS	ONE SIZE · 270 GSM · RECYCLED SNAPBACK CLOSURE
FEATURES	MID VISOR
SUSTAINABLE FEATURES	RECYCLED BUCKRAM · RETRAZE® RECYCLED VISOR SELF FABRIC SWEATBAND · IMPACT REDUCTION: -22% CO ₂ eq* 0,751 kg CO ₂ eq



Sport Sandwich-S

- Main Fabric: 80% organic cotton - 20% recycled cotton
- Texture: twill



TECH SPECS	ONE SIZE · 200 GSM · SNAP BUCKLE WITH SEWN HOLE
FEATURES	CURVED VISOR · SANDWICH ON VISOR · LIGHT BRUSHED
SUSTAINABLE FEATURES	RECYCLED BUCKRAM · R-PET SWEATBAND · RETRAZE® RECYCLED VISOR IMPACT REDUCTION: -21% CO ₂ eq* · 0,680 kg CO ₂ eq



Swing-S

- Main Fabric: 80% organic cotton - 20% recycled cotton
- Texture: twill



DARK GREY KHAKI BLACK NAVY OLIVE

TECH SPECS	ONE SIZE · 280 GSM · HOOK & LOOP CLOSURE
FEATURES	MID VISOR · LIGHT BRUSHED
SUSTAINABLE FEATURES	RETRAZE® RECYCLED VISOR · R-PET SWEATBAND IMPACT REDUCTION: -21% CO ₂ eq* · 0,665 kg CO ₂ eq



Sweatband, Taping
100% GRS Recycled Polyester
Visor 100% GRS Recycled Polyethylene
Certified by ICEA
ICEA-TX-3146



Sweatband, Taping
100% GRS Recycled Polyester
Visor 100% GRS Recycled Polyethylene
Certified by ICEA
ICEA-TX-3146



Tank-S

- Main Fabric: 80% organic cotton - 20% recycled cotton
- Texture: twill



DARK GREY KHAKI BLACK NAVY OLIVE

TECH SPECS	ONE SIZE · 280 GSM · HOOK & LOOP CLOSURE
FEATURES	CURVED VISOR · LIGHT BRUSHED
SUSTAINABLE FEATURES	RETRAZE® RECYCLED VISOR · R-PET SWEATBAND IMPACT REDUCTION: -21% CO ₂ eq* · 0,810 kg CO ₂ eq

Techno Flap-S

- Main Fabric: 100% recycled nylon
- Lining: 100% recycled polyester



DARK GREY BLACK NAVY RED

TECH SPECS	ONE SIZE · 120 GSM · FULLY CLOSED WITH RECYCLED STOPPER
FEATURES	CURVED VISOR · METAL EYELETS · WATER RESISTANT - PFC FREE UNSTRUCTURED FRONT PANEL
SUSTAINABLE FEATURES	RETRAZE® RECYCLED VISOR · FULL R-PET FLEECE LINING IMPACT REDUCTION: -34% CO ₂ eq* · 0,613 kg CO ₂ eq



Main Fabric 100% GRS Recycled Nylon
Lining, Taping 100% GRS Recycled Polyester
Visor 100% GRS Recycled Polyethylene
Certified by ICEA
ICEA-TX-3146

Uniform-S

- Main Fabric: 80% organic cotton - 20% recycled cotton
- Texture: twill



KHAKI BLACK NAVY OLIVE

TECH SPECS	ONE SIZE · 280 GSM · HOOK & LOOP CLOSURE
FEATURES	CURVED VISOR · GARMENT WASHING
SUSTAINABLE FEATURES	SELF FABRIC SWEATBAND · RECYCLED VISOR IMPACT REDUCTION: -21% CO ₂ eq* · 0,925 kg CO ₂ eq



Taping
100% GRS Recycled Polyester
Certified by ICEA
ICEA-TX-3146

Wind-S

• Main Fabric: 100% recycled polyester



TECH SPECS	ONE SIZE · 70 G
SUSTAINABLE FEATURES	IMPACT REDUCTION: -22% CO ₂ eq* · 0,588 kg CO ₂ eq



Wind-S with Patch

• Main Fabric: 100% recycled polyester



TECH SPECS	ONE SIZE · 74 G
FEATURES	BLANK PATCH
SUSTAINABLE FEATURES	IMPACT REDUCTION: -23% CO ₂ eq* · 0,684 kg CO ₂ eq

Wind-S with pompom

• Main Fabric: 100% recycled polyester



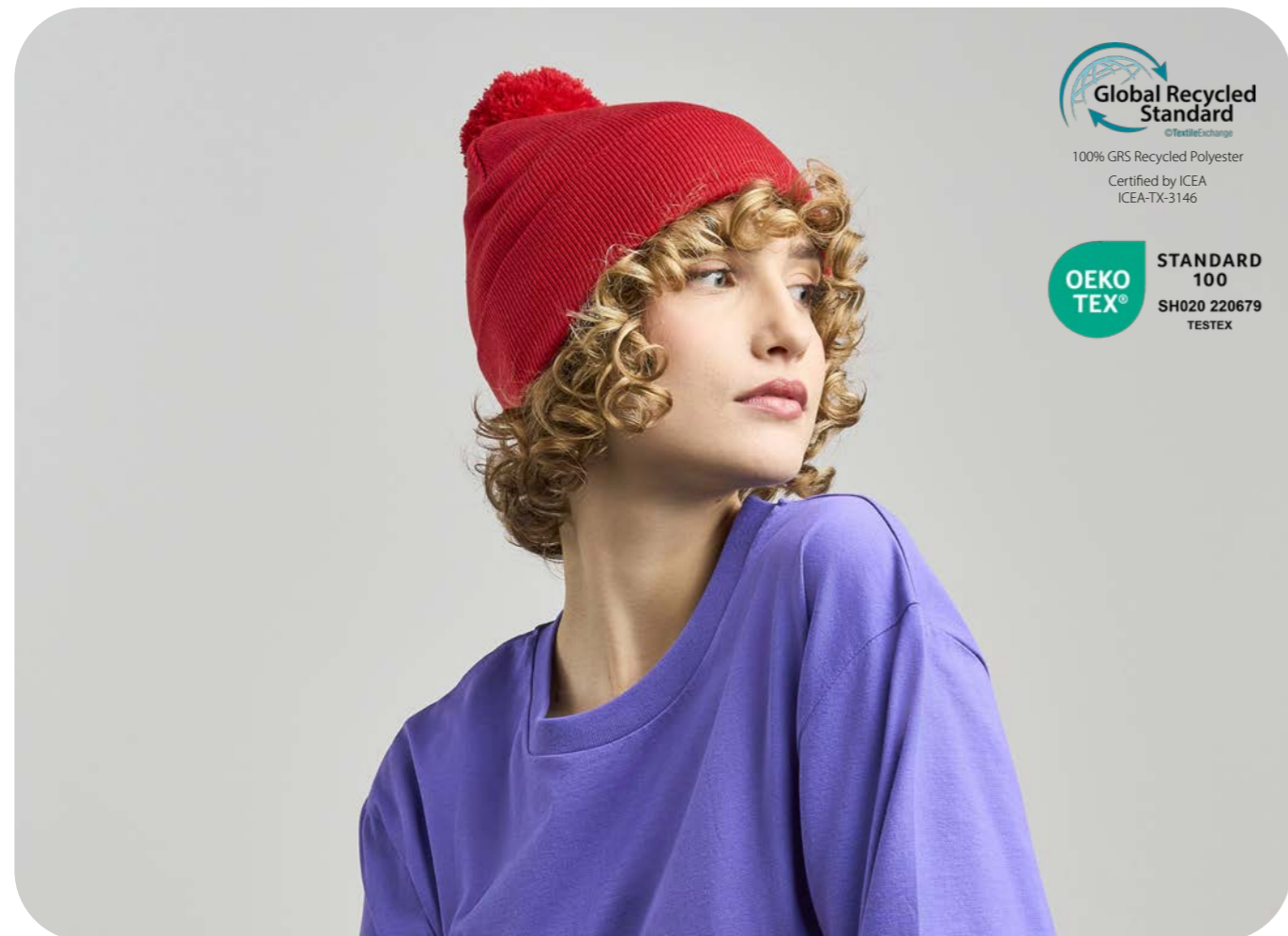
TECH SPECS	ONE SIZE · 85 G
SUSTAINABLE FEATURES	IMPACT REDUCTION: -29% CO ₂ eq* · 0,696 kg CO ₂ eq

Wind Scarf-S

• Main Fabric: 100% recycled polyester



TECH SPECS	160x25CM · 146 G
SUSTAINABLE FEATURES	IMPACT REDUCTION: -23% CO ₂ eq* · 1,100 kg CO ₂ eq



Winner-S

- Main Fabric: 100% recycled polyester
- Texture: twill



BLACK

NAVY

TECH SPECS	ONE SIZE · 300 GSM · FULL METAL BUCKLE WITH SEWN HOLE
FEATURES	CURVED VISOR · LAUREL ON VISOR
SUSTAINABLE FEATURES	RECYCLED BUCKRAM · RETRAZE® RECYCLED VISOR · R-PET SWEATBAND IMPACT REDUCTION: -21% CO ₂ eq* · 0,671 kg CO ₂ eq



Main Fabric, Sweatband, Taping, Buckram
100% GRS Recycled Polyester
Visor 100% GRS Recycled Polyethylene
Certified by ICEA
ICEA-TX-3146



Workout-S

- Main Fabric: 100% recycled polyester



ORANGE FLUO



YELLOW FLUO



BLACK

TECH SPECS	ONE SIZE · 74 G
FEATURES	REFLECTIVE YARN
SUSTAINABLE FEATURES	IMPACT REDUCTION: -22% CO ₂ eq* · 0,629 kg CO ₂ eq

Yala

• Main Fabric: 100% organic cotton



TECH SPECS	ONE SIZE · 60 G
SUSTAINABLE FEATURES	IMPACT REDUCTION: -9% CO ₂ eq* · 0,735 kg CO ₂ eq



Organic
Certified by ICEA
GOTS-11099

Yukon

• Main Fabric: 100% recycled polyester
• Texture: microtwill



TECH SPECS	ONE SIZE · 200 GSM · RECYCLED SNAPBACK CLOSURE
FEATURES	MID VISOR
SUSTAINABLE FEATURES	RECYCLED BUCKRAM · R-PET SWEATBAND · RETRAZE® RECYCLED VISOR IMPACT REDUCTION: -20% CO ₂ eq* · 0,549 kg CO ₂ eq



Main Fabric 97% GRS Recycled Polyester
Sweatband, Buckram
100% GRS Recycled Polyester
Visor 100% GRS Recycled Polyethylene
Certified by ICEA
ICEA-TX-3146

Zion

- Main Fabric: 100% recycled polyester
- Side & Back: 100% recycled polyester
- Texture: twill



TECH SPECS	ONE SIZE · 200 GSM · RECYCLED SNAPBACK CLOSURE
FEATURES	CURVED VISOR
SUSTAINABLE FEATURES	RECYCLED BUCKRAM · RETRAZE® RECYCLED VISOR SELF FABRIC SWEATBAND · IMPACT REDUCTION: -22% CO ₂ eq* 0,507 kg CO ₂ eq





Action

• Main Fabric: 100% cotton



TECH SPECS	ONE SIZE · 280 GSM · SUNDAY BUCKLE
FEATURES	CURVED VISOR · GARMENT WASHING · METAL EYELETS
SUSTAINABLE FEATURES	RETRAZE® RECYCLED VISOR



Bandana Goal

• Main Fabric: 100% cotton



TECH SPECS	52x52 · 110 GSM
------------	-----------------

Beat

• Main Fabric: 100% polyester
• Underbill: 100% cotton



TECH SPECS	ONE SIZE · 300 GSM · SNAPBACK CLOSURE
FEATURES	MID VISOR · COTTON SWEATBAND · STRUCTURED FRONT PANEL
SUSTAINABLE FEATURES	RETRAZE® RECYCLED VISOR

Bolt

• Main Fabric: 100% polyester



BLACK

NAVY



TECH SPECS	ONE SIZE · 170 GSM · HIGH QUALITY HOOK & LOOP CLOSURE
FEATURES	CURVED VISOR · STRETCHABLE FABRIC · DRY-TECH SWEATBAND
SUSTAINABLE FEATURES	RETRAZE® RECYCLED VISOR

Bucket Cotton

• Main Fabric: 100% cotton



WHITE

KHAKI

BLACK

NAVY

OLIVE

ROYAL



TECH SPECS	ONE SIZE · 180 GSM
FEATURES	SOFT CROWN
SUSTAINABLE FEATURES	SELF FABRIC SWEATBAND

Cargo

• Main Fabric: 100% cotton



YELLOW

GREY

BLACK

NAVY



TECH SPECS	ONE SIZE · 280 GSM · SUNDAY BUCKLE CLOSURE
FEATURES	CURVED VISOR · GARMENT WASHING · STRUCTURED FRONT PANEL

Case

• Main Fabric: 100% cotton
• Side & back: 100% polyester



BLACK-STONE

NAVY-STONE



TECH SPECS	ONE SIZE · 250 GSM · HOOK & LOOP CLOSURE
FEATURES	MID VISOR · PIGMENT DYED FABRIC · UNSTRUCTURED FRONT PANEL

Dad Hat

• Main Fabric: 100% chino cotton



TECH SPECS ONE SIZE · 280 GSM · FULL METAL BUCKLE WITH METAL HOLE
FEATURES MID VISOR · UNSTRUCTURED FRONT PANEL · GARMENT WASHING



Digg

• Main Fabric: 100% cotton



TECH SPECS ONE SIZE · 250 GSM · FULL METAL BUCKLE WITH METAL HOLE
FEATURES MID VISOR · PIGMENT DYED FABRIC · UNSTRUCTURED FRONT PANEL

Docker

• Main Fabric: 80% acrylic - 20% polyester



TECH SPECS ONE SIZE · 80 G

Eko Beanie

• Main Fabric: 100% acrylic



TECH SPECS

ONE SIZE · 80 G

Flash

• Main Fabric: 95% cotton - 5% elastane



TECH SPECS

ONE SIZE · 200 GSM

FEATURES

STRETCHABLE FABRIC

Estoril

• Main Fabric: 100% polyester



TECH SPECS

ONE SIZE · 150 GSM · HIGH QUALITY HOOK&LOOP WITH PLASTIC BUCKLE

FEATURES

CURVED VISOR · HALF PIPING ON VISOR · STRUCTURED FRONT PANEL

Forever

• Main Fabric: 100% cotton



TECH SPECS

S/M - L/XL · 280 GSM

FEATURES

GARMENT WASHING

Freedom Basic

• Main Fabric: 100% polyester



BLACK

RED

TECH SPECS

49x25 · 130 GSM

Gear

• Main Fabric: 100% cotton
• Front&bill: 98% polyester - 2% elastane



WHITE

BLACK



RED

NAVY

TECH SPECS

ONE SIZE · 280 GSM · HOOK & LOOP CLOSURE

FEATURES

CURVED VISOR · STRUCTURED FRONT PANEL · COTTON SWEATBAND

Hit

• Main Fabric: 100% cotton



WHITE



NAVY



DARK GREY



BLACK



OLIVE



RED



LIGHT GREY

TECH SPECS

ONE SIZE · 280 GSM · SUNDAY BUCKLE

FEATURES

CURVED VISOR · STRUCTURED FRONT PANEL · SELF FABRIC SWEATBAND

Hotty

• Main Fabric: 100% polyester



BLACK



NAVY

TECH SPECS

28x25 CM · 230 GSM · ELASTIC STRING WITH PLASTIC STOPPER

Liberty Five

• Main Fabric: 100% cotton



NAVY RED BLACK BOTTLE GREEN

TECH SPECS	ONE SIZE · 260-265 GSM · HOOK & LOOP CLOSURE
FEATURES	CURVED VISOR · STRUCTURED FRONT PANEL · HEAVY BRUSHED

Liberty Five Buckle

• Main Fabric: 100% cotton



BLACK

TECH SPECS	ONE SIZE · 260-265 GSM · SNAP BUCKLE WITH SEWN HOLE
FEATURES	CURVED VISOR · STRUCTURED FRONT PANEL · HEAVY BRUSHED

Liberty Sandwich

• Main Fabric: 100% cotton



LIGHT BLUE-WHITE WHITE-NAVY WHITE-WHITE GREY-WHITE
 LIGHT GREY-WHITE GREY-NAVY-GREY KHAKI-KHAKI NATURAL-NAVY-NATURAL BLACK-WHITE BLACK-GREY-BLACK BLACK-BLACK BLACK-RED
 NAVY-WHITE NAVY-NAVY OLIVE-NATURAL RED-WHITE RED-NAVY-RED ROYAL-WHITE GREEN-WHITE PURPLE-WHITE

TECH SPECS	ONE SIZE · 275 GSM · SNAP BUCKLE WITH SEWN HOLE
FEATURES	CURVED VISOR · STRUCTURED FRONT PANEL · SANDWICH ON VISOR HEAVY BRUSHED



Liberty Six

• Main Fabric: 100% cotton



BLACK NAVY RED ROYAL

TECH SPECS ONE SIZE · 260-265 GSM · HOOK & LOOP CLOSURE
FEATURES CURVED VISOR · STRUCTURED FRONT PANEL · HEAVY BRUSHED

Moover

• Main Fabric: 100% acrylic



DARK GREY NAVY

TECH SPECS ONE SIZE · 55 G

Liberty Six Buckle

• Main Fabric: 100% cotton



NAVY BLACK KHAKE

TECH SPECS ONE SIZE · 260-265 GSM · FULL METAL BUCKLE WITH METAL HOLE
FEATURES CURVED VISOR · STRUCTURED FRONT PANEL · HEAVY BRUSHED

Pilot

• Main Fabric: 100% cotton



KHAKE BLACK NAVY OLIVE

TECH SPECS ONE SIZE · 320 GSM · FULL METAL BUCKLE WITH SEWN HOLE
FEATURES CURVED VISOR · STRUCTURED FRONT PANEL · HEAVY BRUSHED

Pilot Piping Sandwich

• Main Fabric: 100% cotton



TECH SPECS

ONE SIZE · 320 GSM · FULL METAL BUCKLE WITH METAL HOLE

FEATURES

CURVED VISOR · STRUCTURED FRONT PANEL · PIPING ON VISOR
HEAVY BRUSHED



Rapper

• Main Fabric: 100% polyester
• Side & Back: 100% polyester



TECH SPECS

ONE SIZE · 80 GSM · SNAPBACK CLOSURE

FEATURES

CURVED VISOR · PADDED FRONT PANEL



Rapper Canvas

- Main Fabric: 100% cotton
- Side & Back: 100% polyester



TECH SPECS

ONE SIZE · 260 GSM · SNAPBACK CLOSURE

FEATURES

CURVED VISOR · STRUCTURED FRONT PANEL · GARMENT WASHING
SHORT VISOR



Rapper Cotton

- Main Fabric: 100% cotton
- Side & Back: 100% polyester



TECH SPECS

ONE SIZE · 180 GSM · SNAPBACK CLOSURE

FEATURES

CURVED VISOR · STRUCTURED FRONT PANEL



Rapper Jersey

- Main Fabric: 100% cotton
- Side & Back: 100% polyester



DARK GREY NAVY

TECH SPECS	ONE SIZE · 220 GSM · SNAPBACK CLOSURE
FEATURES	MID VISOR · STRUCTURED FRONT PANEL · SOFT MESH

Shot

- Main Fabric: 100% cotton



WHITE YELLOW LIGHT GREY DARK GREY
BLACK NAVY RED ROYAL

TECH SPECS	ONE SIZE · 280 GSM · SUNDAY BUCKLE
FEATURES	CURVED VISOR · STRUCTURED FRONT PANEL · SELF FABRIC SWEATBAND

Skate

- Main Fabric: 100% acrylic



BLACK NAVY DARK GREY

TECH SPECS	ONE SIZE · 69 G
------------	-----------------

Snap Back

- Main Fabric: 100% polyester
- Underbill: 100% cotton



BLACK BLACK-GREY
NAVY NAVY-RED

TECH SPECS	ONE SIZE · 300 GSM · SNAPBACK CLOSURE
FEATURES	FLAT VISOR · STRUCTURED FRONT PANEL · COTTON SWEATBAND

Snap Five

- Main Fabric: 100% polyester
- Underbill: 100% cotton



BLACK NAVY RED



TECH SPECS	ONE SIZE · 300 GSM · SNAPBACK CLOSURE
FEATURES	FLAT VISOR · STRUCTURED FRONT PANEL · COTTON SWEATBAND

Sport Sandwich

- Main Fabric: 100% cotton



WHITE-NAVY WHITE-WHITE GREY-WHITE
 BLACK-WHITE BLACK-BLACK NAVY-WHITE
 NAVY-NAVY OLIVE-WHITE GREEN - WHITE BOTTLE GREEN - WHITE



TECH SPECS	ONE SIZE · 180 GSM · SNAP BUCKLE WITH SEWN HOLE
FEATURES	CURVED VISOR · STRUCTURED FRONT PANEL · SANDWICH ON VISOR

Snow Flap Stopper

- Main Fabric: 100% polyester



BLACK



TECH SPECS	ONE SIZE · 240 GSM · FULLY CLOSED ON BACK WITH STOPPER
FEATURES	CURVED VISOR · UNSTRUCTURED FRONT PANEL SELF FABRIC SWEATBAND



Start Five

• Main Fabric: 100% cotton



TECH SPECS ONE SIZE · 165 GSM · HOOK & LOOP CLOSURE
 FEATURES CURVED VISOR · STRUCTURED FRONT PANEL



Start Five Italia

• Main Fabric: 100% cotton



TECH SPECS ONE SIZE · 165 GSM · HOOK & LOOP CLOSURE
 FEATURES CURVED VISOR · STRUCTURED FRONT PANEL · HALF PIPING ON VISOR

Start Five Sandwich

• Main Fabric: 100% cotton



TECH SPECS ONE SIZE · 165 GSM · HOOK & LOOP CLOSURE
 FEATURES CURVED VISOR · STRUCTURED FRONT PANEL · SANDWICH ON VISOR

Start Six

• Main Fabric: 100% cotton



TECH SPECS

ONE SIZE · 165 GSM · HOOK & LOOP CLOSURE

FEATURES

CURVED VISOR · STRUCTURED FRONT PANEL

Uniform

• Main Fabric: 100% cotton



TECH SPECS

ONE SIZE · 280 GSM · HOOK & LOOP CLOSURE

FEATURES

CURVED VISOR · SELF FABRIC SWEATBAND · GARMENT WASHING

Viral

• Main Fabric: 47% viscose - 23% polyester - 30% nylon



TECH SPECS

ONE SIZE · 78 G



Wind

• Main Fabric: 100% acrylic



TECH SPECS

ONE SIZE · 70 G



Zoom

• Main Fabric: 65% polyester - 35% cotton



TECH SPECS

ONE SIZE · 180 GSM · HOOK & LOOP CLOSURE

FEATURES

CURVED VISOR · STRUCTURED FRONT PANEL



The preferred materials portfolio

The **environmental impact benefits** derived from our choice of **preferred materials** are clearly outlined in the 'Sustainable Features' section for each **lower-impact product**, marked with an asterisk (*). These notations underscore the **specific CO₂eq impact reductions in percentage and the Carbon Footprint of one unit**, demonstrating the advantages of our **environmentally conscious practices**.

Life Cycle Assessment (LCA) studies on our top-selling products¹ reveal that **45.5% to 75% of CO₂ equivalent emissions are attributable to the materials used in our hats**. This insight drives our preference for **recycled materials** to **mitigate environmental impact significantly**.

In cases where recycled options are unavailable, we choose virgin materials with the minimal possible environmental footprint or from regenerative sources.

Discover the **preferred materials** featured in the Atlantis 2026 Collection, designed to collectively **reduce the impact of our choices**:

- Dope-dyed recycled polyester
- Organic cotton
- Polylana®
- Recycled cotton
- Recycled polyester
- Recycled nylon
- Recycled polyethylene
- Recycled merino wool
- Repreve®
- Textile-to-Textile recycled polyester



Our **ongoing product assessment**, crucial for our **transparency**, empowers you with **essential information** to make informed purchasing decisions. This process also helps **optimize our design choices**, continually **minimizing the environmental impact** of our products.

We invite you to **explore the CO₂eq impact reductions** for each item crafted from our **preferred materials**².

¹ <https://atlantisheadwear.com/en/projects/carbon-footprint/>

² Reductions are calculated through a sensitivity analysis contrasting the environmental impact of low-impact materials against conventional ones, using the certified CF Atlantis calculation tool v. 0.7. This tool meticulously tracks the Cradle to gate journey from raw material acquisition to final product delivery at the Atlantis warehouse.



Embracing Circular Innovation with Textile-to- Textile Recycled Polyester

At the core of our innovation lies a deep commitment to environmental responsibility. We continually push the boundaries with polyester, a fiber known for its durability, wrinkle resistance, and lightweight nature. Mechanically recycled polyester (rPET), derived from PET bottles, has been a significant step toward more responsible fashion. It is **widely available** and makes use of **existing waste**, thus **reducing our environmental footprint**.

However, recognizing that rPET is not the ultimate solution, we introduced a groundbreaking innovation starting with our 2025 collection: **textile-to-textile recycled polyester**. This material begins as textile waste and is **chemically transformed into high-quality, recyclable fibers that mimic virgin polyester** but with a significantly lower environmental impact. Managed under the strictest health and safety standards¹, this process not only aligns with sustainability principles but also challenges the status quo of responsible materials.

With each new collection, we take the next step forward. This year, Teide joins Maui in our virtuous and sustainable product line. It is the **second product made from textile-to-textile recycled polyester**, created by transforming textile waste into high-quality fibers that look and perform like virgin polyester, but with a much lower environmental impact.

¹ <https://textileexchange.org/pfmm/>

Two materials that move us forward

Wool is a remarkable natural fiber: light, breathable, and capable of providing warmth even in the most extreme conditions. Yet its production can have significant impacts on both animal welfare and the environment.

This is why we chose a different path. Our **new wool fabric is made from 100% recycled pre-consumer wool**, recovered from industrial offcuts before they become waste.

It preserves the essential qualities of wool while avoiding the impacts linked to virgin fiber production.

Available comparative analyses conducted with the CF Atlantis calculation tool show that **1 kg of recycled wool can reduce environmental impact by up to 88% compared to virgin wool¹ fabric.**

A concrete step towards circularity, built on the value of resources already in circulation.

Denim follows a similar direction. Known for its durability and iconic look, denim also carries a traditionally high environmental footprint, particularly due to water consumption and intensive use of chemicals in production. Starting with the 2026 collection, we introduce a **more responsible alternative** on both the fabric and dyeing levels.

Our new material combines **50% recycled cotton** with a more efficient dyeing technology: **DyStar® Indigo Vat 40% Solution²**, a pre-reduced liquid formulation that, compared to traditional indigo-powder dyeing, helps:

- eliminate up to 70% of sodium hydrosulfite
- reduce pollutants in wastewater (-70% COD, -40% sulfates, -90% suspended solids)
- ensure chemical responsibility thanks to bluesign® certification

Choosing this fabric means promoting **material reuse**, lowering water and chemical demand, and benefiting from a dyeing process with demonstrably **lower impact**. Overall, this solution delivers an **approximate 20% reduction in carbon footprint** compared to standard denim³.

Two new materials, one direction: using what already exists, refining the processes that shape it, and moving design toward a **more responsible future**.

¹ Reduction values are estimated through a comparative analysis between recycled and virgin wool using the certified CF Atlantis calculation tool v.0.7.

² Data provided by DyStar®, comparing Indigo Vat 40% Solution with traditional indigo-powder dyeing.

³ Carbon footprint estimate based on a comparative analysis using the ecoinvent 3.11 database, supported by custom datasets. The study compared conventional denim (100% cotton, traditionally dyed) with a fabric containing 50% post-consumer recycled cotton dyed with a lower-impact technology.





Not only fabrics

We go further, converting traditional components into recycled alternatives:

RECYCLED VISOR

RECYCLED BUCKRAM

RECYCLED CLOSURES

RECYCLED SWEATBAND

RECYCLED TAPING

RECYCLED LAMINATION

